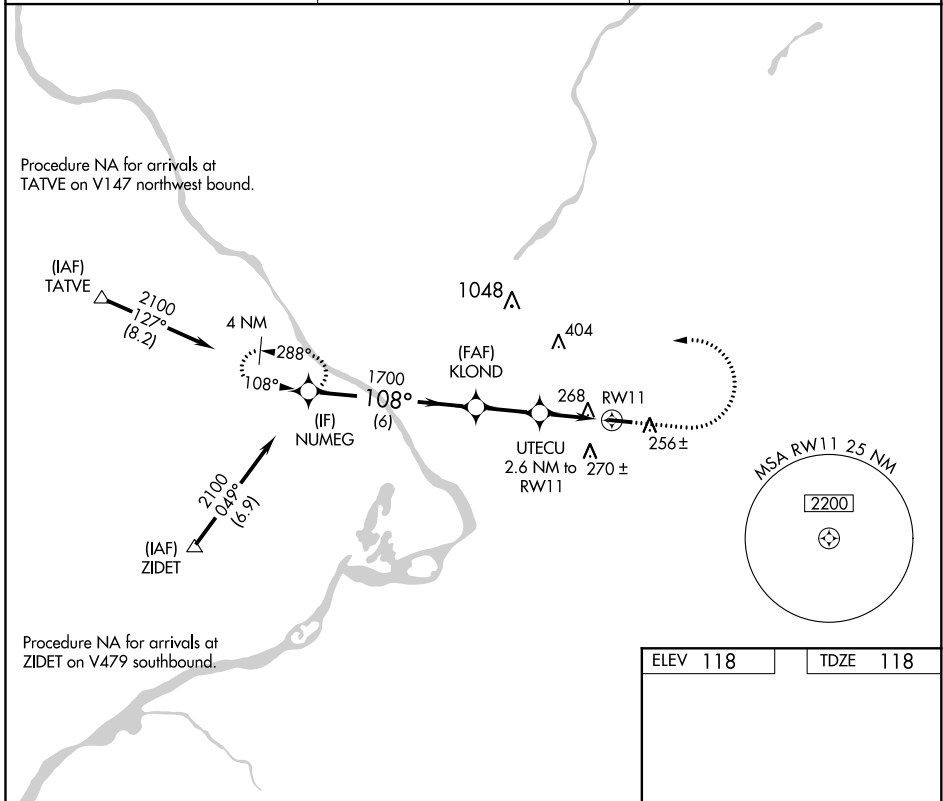


APP CRS	Rwy Idg	<b>3877</b>
<b>108°</b>	TDZE	<b>118</b>
	Apt Elev	<b>118</b>

# RNAV (GPS) RWY 11

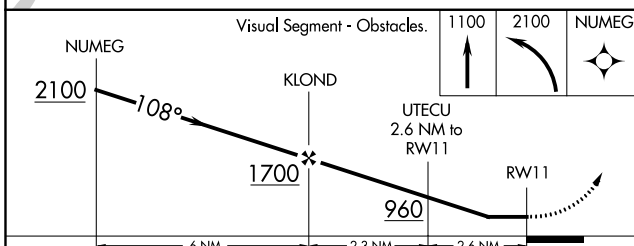
TRENTON-ROBBINSVILLE (N87)

RNP APCH.		MISSED APPROACH: Climb to 1100, then climbing left turn to 2100 direct NUMEG and hold.
<p><b>▼</b> Procedure NA at night. Rwy 11 helicopter visibility reduction below 1 SM NA. Use Wrightstown altimeter setting.</p> <p><b>▲</b> NA</p>		
MC GUIRE APP CON	UNICOM	<b>123.3 0</b>
<b>126.475 363.8</b>	<b>123.0 (CTAF)</b>	

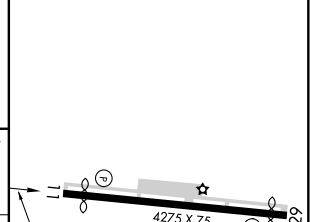


NE-2, 04 NOV 2021 to 02 DEC 2021

NE-2, 04 NOV 2021 to 02 DEC 2021



ELEV 118	TDZE 118
----------	----------



CATEGORY	A	B	C	D
LNNAV MDA	640-1	522 (600-1)	640-1 <sup>5</sup> / <sub>8</sub>	522 (600-1 <sup>5</sup> / <sub>8</sub> )
CIRCLING	680-1	562 (600-1)	680-1 <sup>5</sup> / <sub>8</sub>	680-2
			562 (600-1 <sup>5</sup> / <sub>8</sub> )	562 (600-2)

MIRL Rwy 11-29 **0**