

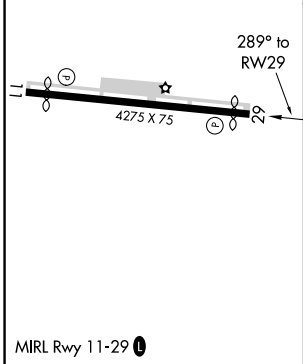
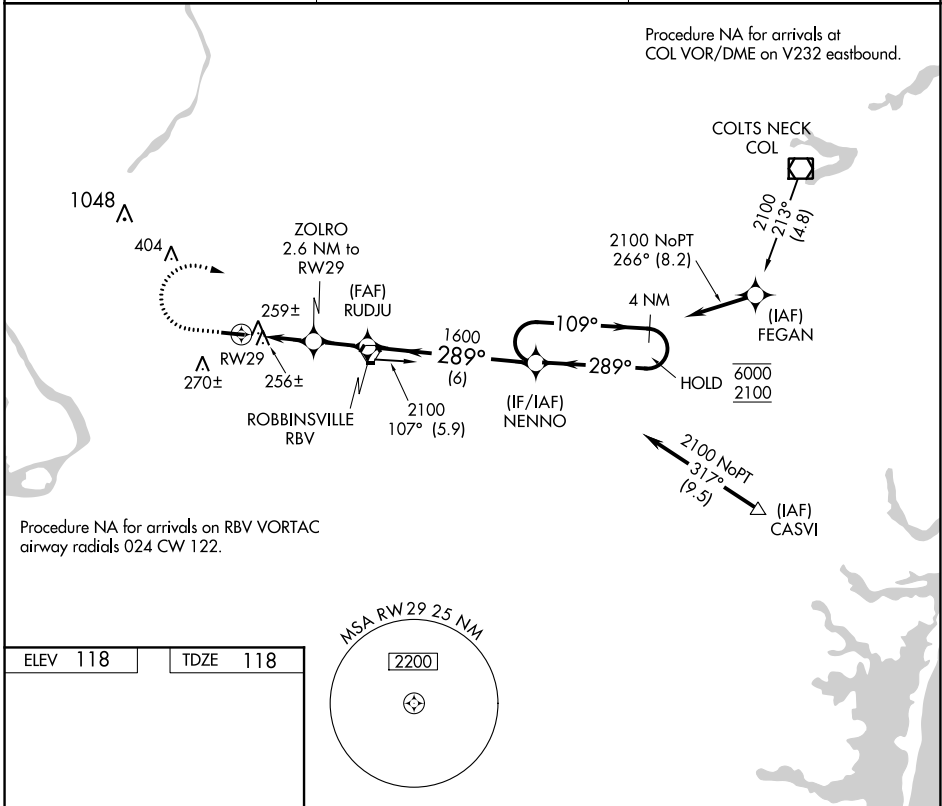
APP CRS 289°	Rwy ldg TDZE Apt Elev	3975 118 118
------------------------	-----------------------------	---

RNAV (GPS) RWY 29

TRENTON-ROBBINSVILLE (N87)

RNP APCH.	MISSED APPROACH: Climb to 1000, then climbing right turn to 2100 direct NENNO and hold.
<p>Procedure NA at night. Rwy 29 helicopter visibility reduction below 1 SM NA. Use Wrightstown altimeter setting.</p>	

MC GUIRE APP CON 126.475 363.8	UNICOM 123.0 (CTAF)	123.3
--	-------------------------------	--------------



1000	2100	NENNO	Visual Segment - Obstacles.	
			NENNO	4 NM Holding Pattern
			RUDJU	
			ZOLRO 2.6 NM to RWY 29	
			RWY 29	
			980	1600
			2.6 NM	1.9 NM
			6 NM	
			109° →	6000
			← 289°	2100
CATEGORY	A	B	C	D
LNAV MDA	540-1	422 (500-1)	540-1¼	422 (500-1¼)
CIRCLING	680-1	562 (600-1)	680-1½	680-2
			562 (600-1½)	562 (600-2)

NE-2, 04 NOV 2021 to 02 DEC 2021

NE-2, 04 NOV 2021 to 02 DEC 2021