

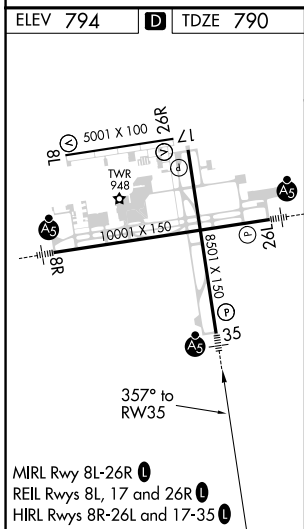
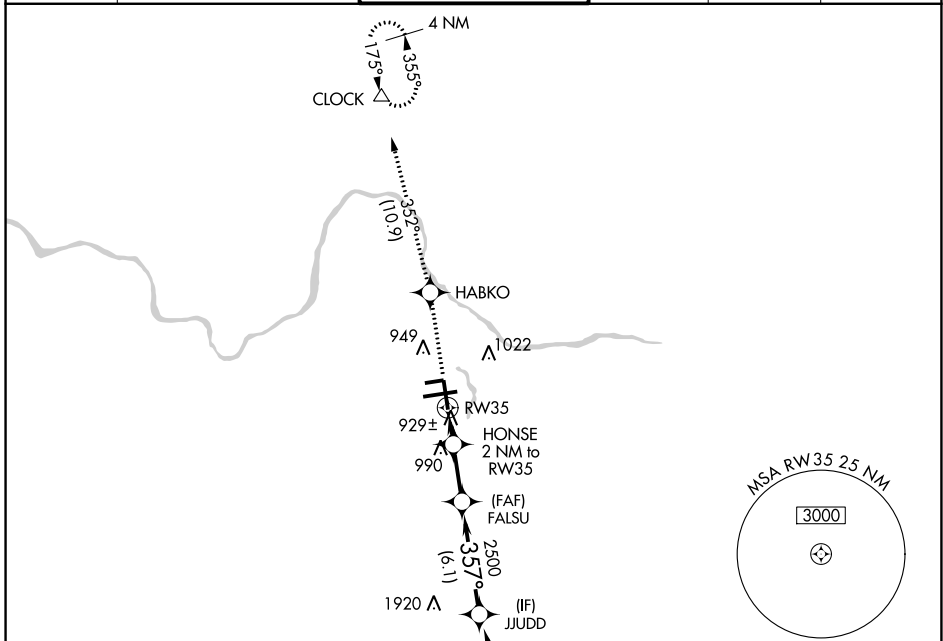
WAAS CH 87112 W35A	APP CRS 357°	Rwy Idg 8501 TDZE 790 Apt Elev 794
--	------------------------	---

RNAV (GPS) RWY 35

GERALD R FORD INTL (G.R.R.)

RNP APCH.	MALSR	MISSED APPROACH: Climb to 3000 direct HABKO and track 352° to CLOCK and hold.
ASR	ASR	For uncompensated Baro-VNAV systems, LNAV/VNAV NA below -16°C or above 54°C. For inop ALS, increase LNAV Cat D visibility to RVR 6000. ** RVR 1800 authorized with use of FD or AP or HUD to DA.

ATIS 118.725	GREAT LAKES APP CON * 128.4 257.6	GRAND RAPIDS TOWER * 135.65 (CTAF) 0 339.8	GND CON 121.8	CLNC DEL 119.3	UNICOM 122.95
------------------------	---	--	-------------------------	--------------------------	-------------------------



GRAND RAPIDS, MICHIGAN
Amdt 1C 12SEP19

ELEV 794	D	TDZE 790	Procedure NA for arrivals at BOHRR on V285 southbound.			
3000	HABKO	CLOCK	VGSi and RNAV glidepath not coincident (VGSi Angle 3.00/TCH 74).			
↑	✧	△	JUDD			
* LNAV only.	HONSE 2 NM to RW35	FALSU 2500	3000			
	* 1 NM to RW35	* 1480	GP 3.00° TCH 55			
	1 NM	3.1 NM	6.1 NM			
CATEGORY	A	B	C	D		
LPV DA**	990/24		200 (200-½)			
LNAV/VNAV DA	1236/50		446 (500-1)			
LNAV MDA	1180/24	390 (400-½)	1180/35	1180/50	1180/50	
			390 (400-¾)	390 (400-1)	390 (400-1)	
CIRCLING	1260-1	466 (500-1)	1340-1½	1360-2	1360-2	
			546 (600-1½)	566 (600-2)	566 (600-2)	

RNAV (GPS) RWY 35

EC-1, 04 NOV 2021 to 02 DEC 2021

EC-1, 04 NOV 2021 to 02 DEC 2021