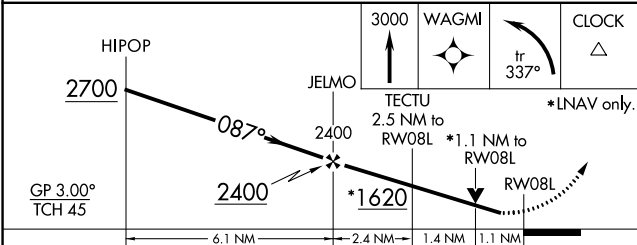
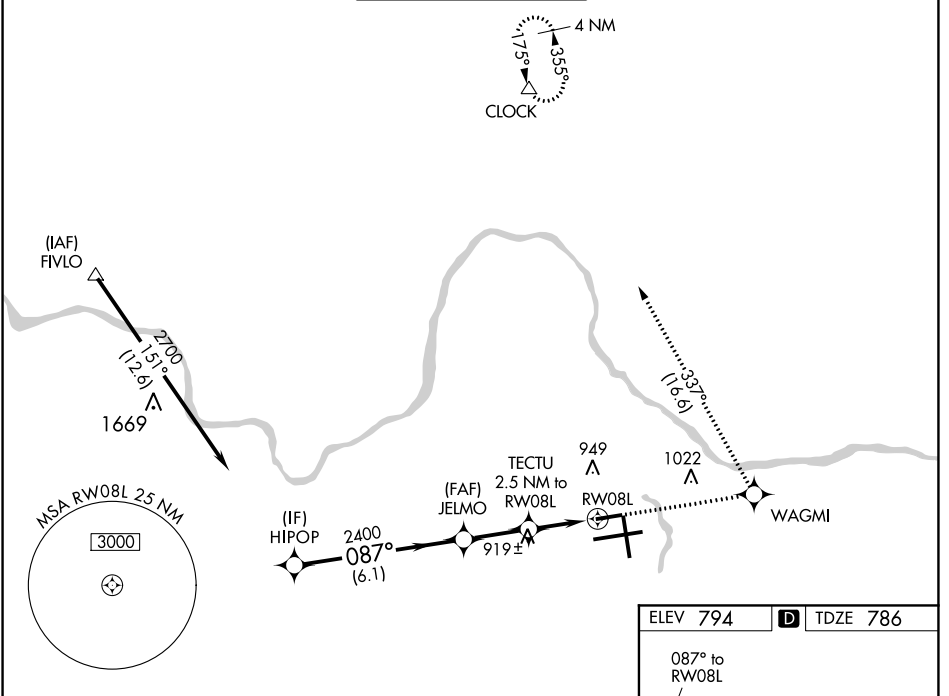


WAAS CH 40213 W08A	APP CRS 087°	Rwy Idg TDZE Apt Elev	5001 786 794
--	------------------------	-----------------------------	---

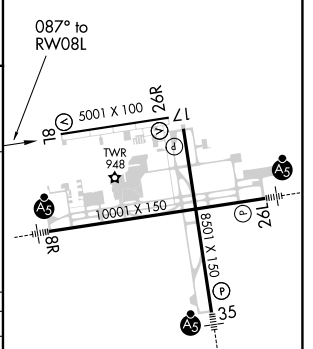
RNAV (GPS) RWY 8L

GERALD R FORD INTL (G.R.)

RNP APCH.		MISSED APPROACH: Climb to 3000 direct WAGMI and left turn on track 337° to CLOCK and hold.		
Rwy 8L helicopter visibility reduction below 3/4 SM NA. For uncompensated Baro-VNAV systems, LNAV/VNAV NA below -16°C or above 54°C.				
ATIS 118.725	GREAT LAKES APP CON * 128.4 257.6	GRAND RAPIDS TOWER * 135.65 (CTAF) 0 339.8	GND CON 121.8	CLNC DEL 119.3
		UNICOM 122.95		



ELEV 794 **D** TDZE 786



CATEGORY	A	B	C	D
LPV DA	1036-1		250 (300-1)	
LNAV/VNAV DA	1203-1½		417 (500-1½)	
LNAV MDA	1180-1	394 (400-1)	1180-1¼ 394 (400-1½)	1180-1¼ 394 (400-1¼)
C CIRCLING	1260-1	466 (500-1)	1340-1½ 546 (600-1½)	1360-2 566 (600-2)

MIRL Rwy 8L-26R **1**
 REIL Rwy 8L, 17 and 26R **1**
 HIRL Rwy 8R-26L and 17-35 **1**

EC-1, 04 NOV 2021 to 02 DEC 2021

EC-1, 04 NOV 2021 to 02 DEC 2021