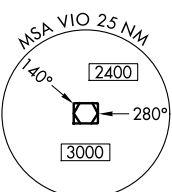
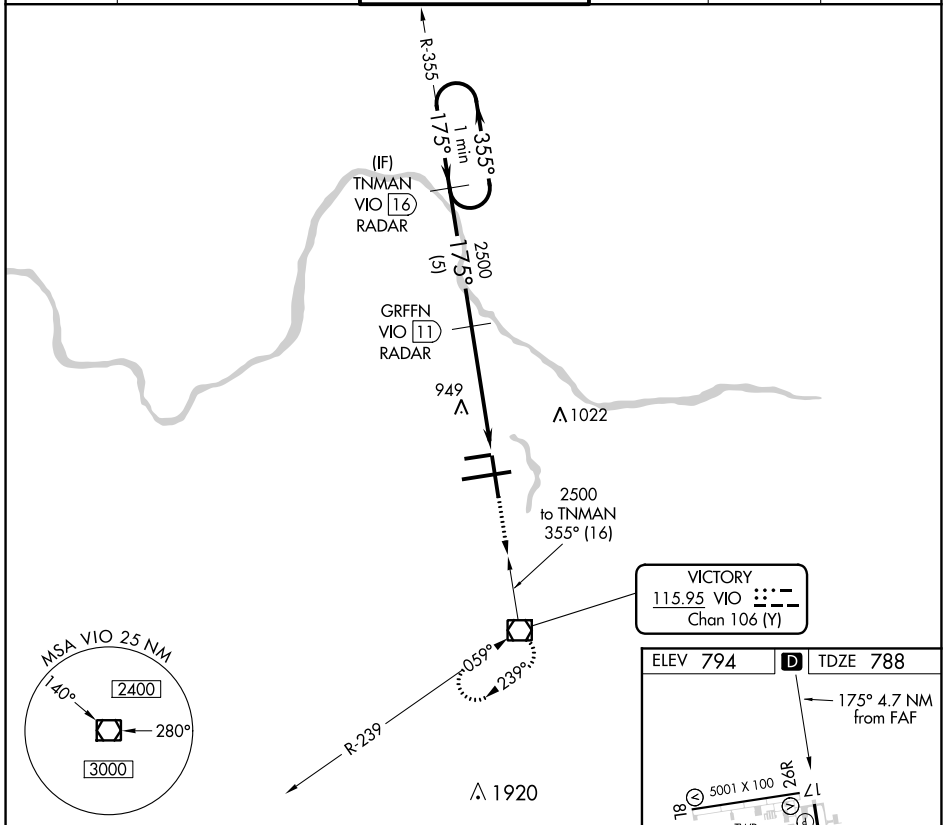


| | | | |
|--------------|---------|----------|------|
| VOR/DME VIO | APP CRS | Rwy Idg | 8501 |
| 115.95 | 175° | TDZE | 788 |
| Chan 106 (Y) | | Apt Elev | 794 |

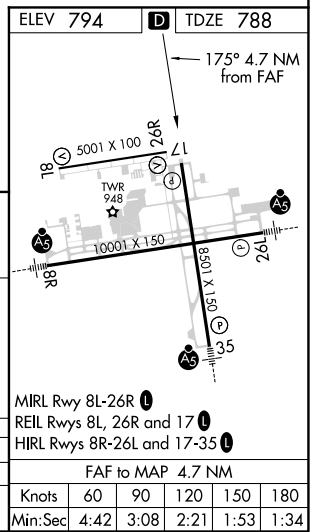
VOR RWY 17

GERALD R FORD INTL (G.R.)

| | | | | | |
|--|-----------------------|---|---------|----------|--------|
| DME or RADAR required. | | MISSED APPROACH: Climb to 3000 direct VIO VOR/DME and hold. | | | |
| <p>⚠ When local altimeter setting not received, use Holland altimeter setting and increase all MDA's 80 feet and increase S-17 Cat D visibility ¼ SM. Rwy 17 helicopter visibility reduction below ¼ SM NA.</p> | | | | | |
| ATIS | GREAT LAKES APP CON * | GRAND RAPIDS TOWER * | GND CON | CLNC DEL | UNICOM |
| 118.725 | 128.4 257.6 | 135.65 (CTAF) 0 339.8 | 121.8 | 119.3 | 122.95 |



VICTORY
115.95 VIO ---
Chan 106 (Y)



| | | | | |
|--|--------------------|--------------------|---------|--------------|
| One Minute Holding Pattern | TNMAN VIO 16 RADAR | GRFFN VIO 11 RADAR | 3000 | VIO |
| 2500 ← 355° | 2500 | 2500 | VIO 7.4 | VIO 6.2 |
| VGSi and descent angles not coincident (VGSi Angle 3.00/TCH 50). | | 3.32° TCH 45 | | |
| 5 NM | | 3.5 NM | 1.2 | |
| CATEGORY | A | B | C | D |
| S-17 | 1200-1 | 412 (500-1) | 1200-1¼ | 412 (500-1¼) |
| CIRCLING | 1280-1 | 486 (500-1) | 1340-1½ | 546 (600-1½) |
| | | | 1360-2 | 566 (600-2) |

EC-1, 04 NOV 2021 to 02 DEC 2021

EC-1, 04 NOV 2021 to 02 DEC 2021