

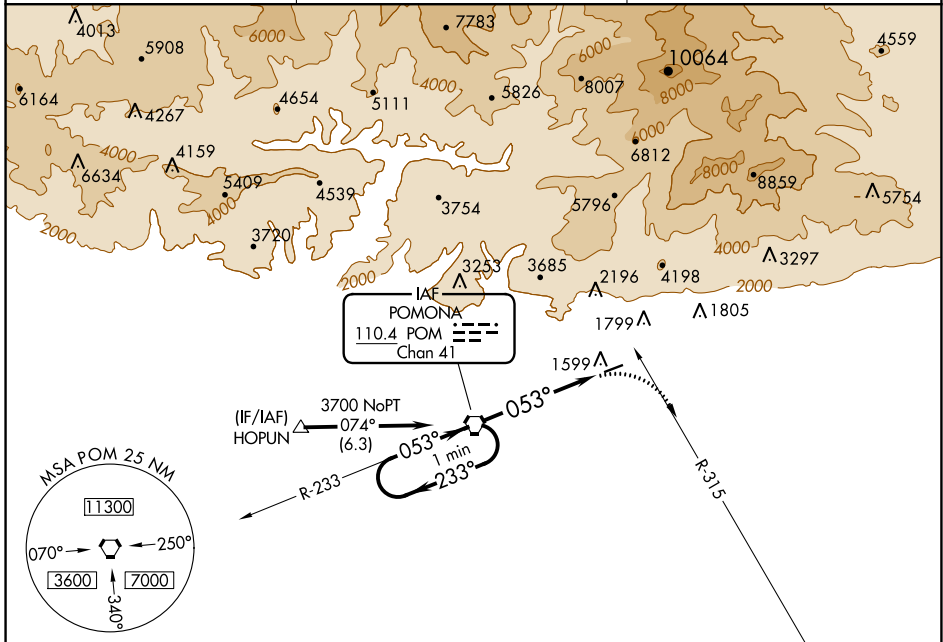
VORTAC POM <b>110.4</b> Chan 41	APP CRS <b>053°</b>	Rwy Idg TDZE Apt Elev <b>N/A</b> <b>N/A</b> <b>1444</b>
---------------------------------------	------------------------	--

**VOR-A**  
CABLE (CCB)

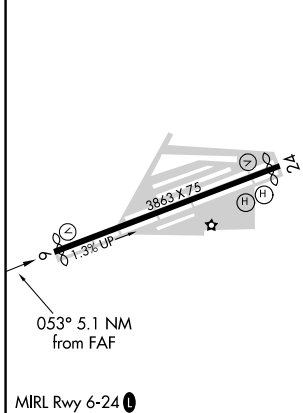
**NA** Circling NA northwest of Rwy 6-24. Procedure NA at night. When local altimeter setting not received, use Ontario altimeter setting and increase all MDA 100 feet and all visibilities ½ SM. Rwy 24 helicopter visibility reduction below 1 SM NA.

MISSED APPROACH: Climbing right turn to 4000 via heading 105° and PDZ R-315 to PDZ VORTAC and hold.

AWOS-3P <b>119.525</b>	SOCAL APP CON <b>125.5 349.0</b>	UNICOM <b>123.0 (CTAF) 0</b>
---------------------------	-------------------------------------	---------------------------------



ELEV 1444

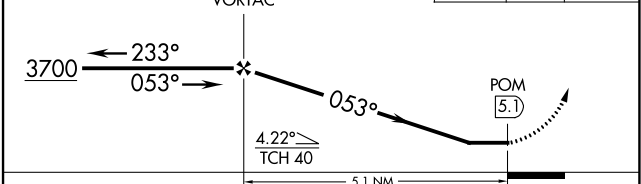


VGSI and descent angles not coincident (VGSI Angle 4.00/TCH 34).

One Minute Holding Pattern

POM VORTAC

4000 hdg 105° PDZ R-315 PDZ



FAF to MAP 5.1 NM					
Knots	60	90	120	150	180
Min:Sec	5:06	3:24	2:33	2:02	1:42
<b>C</b> CIRCLING	2240-1 796 (800-1)		2240-2¼ 796 (800-2¼)		NA

SW-3, 04 NOV 2021 to 02 DEC 2021

SW-3, 04 NOV 2021 to 02 DEC 2021