

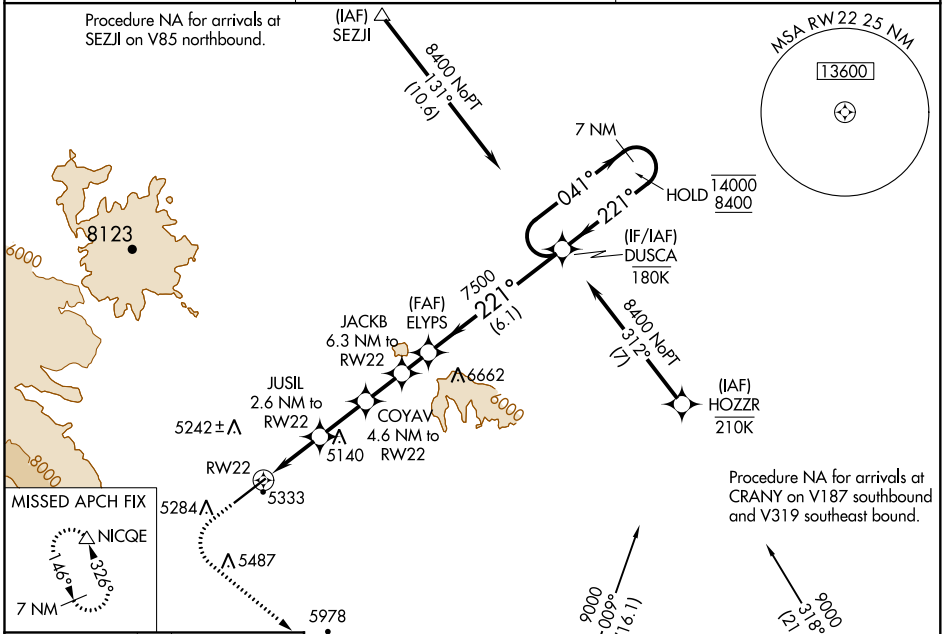
WAAS CH <b>90543</b> W22A	APP CRS <b>221°</b>	Rwy Idg TDZE Apt Elev	<b>7178</b> <b>5076</b> <b>5102</b>
---------------------------------	------------------------	-----------------------------	---

# RNAV (GPS) RWY 22

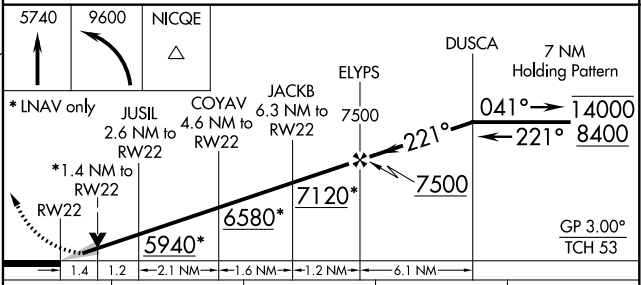
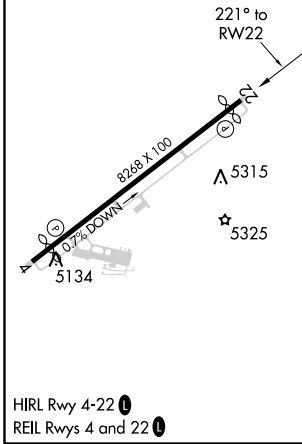
YELLOWSTONE RGNL (COD)

RNP APCH.	MISSED APPROACH: (Do not exceed 185K until NICQE) Climb to 5740 then climbing left turn to 9600 direct NICQE and hold, continue climb-in-hold to 9600.
 -10°C	

AWOS-3PT <b>135.075</b>	SALT LAKE CENTER <b>127.75 351.9</b>	UNICOM <b>122.8 (CTAF) 0</b>
----------------------------	---	---------------------------------



ELEV 5102	<b>D</b>	TDZE 5076
-----------	----------	-----------



CATEGORY	A	B	C	D
LPV DA	5399-1		323 (300-1)	
LNAV MDA	5600-1	524 (500-1)	5600-1½	524 (500-1½)
<b>C</b> CIRCLING	5780-1 678 (700-1)	5900-1 798 (800-1)	5940-2½ 838 (900-2½)	7000-3 1898 (1900-3)

NW-1, 04 NOV 2021 to 02 DEC 2021

NW-1, 04 NOV 2021 to 02 DEC 2021