

# AARPS ONE DEPARTURE (RNAV)

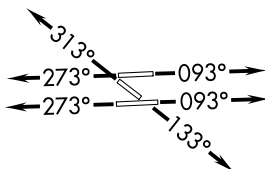
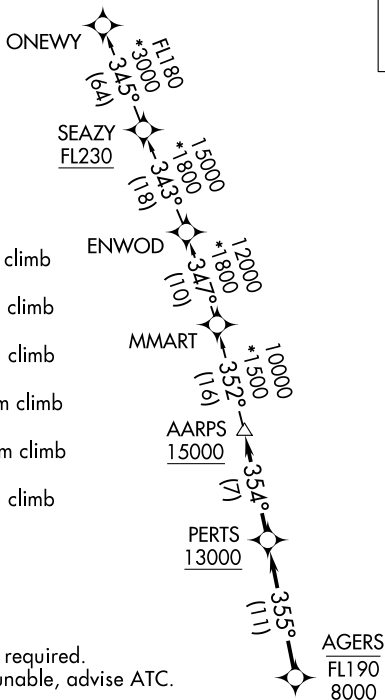
**TOP ALTITUDE:  
ASSIGNED BY ATC**

ATIS  
124.0  
CLINC DEL  
133.0  
GND CON  
121.7  
TAMIAMI TOWER\*  
118.9 (CTAF)  
MIAMI DEP CON  
125.5 354.1

### TAKEOFF MINIMUMS

- Rwy 9L: Standard with minimum climb of 500' per NM to 1300.
- Rwy 9R: Standard with minimum climb of 500' per NM to 1500.
- Rwy 13: Standard with minimum climb of 500' per NM to 1800.
- Rwy 27L: Standard with minimum climb of 500' per NM to 1900.
- Rwy 27R: Standard with minimum climb of 500' per NM to 1700.
- Rwy 31: Standard with minimum climb of 500' per NM to 1400.

- NOTE: RNAV 1.
- NOTE: RADAR required.
- NOTE: Jet aircraft only.
- NOTE: DME/DME/IRU or GPS required.
- NOTE: Accelerate to 250K, if unable, advise ATC.



NOTE: Chart not to scale.

### DEPARTURE ROUTE DESCRIPTION

**TAKEOFF RUNWAYS 9L/R:** Climb on heading 093° or as assigned for RADAR vectors to cross AGERS between 8000 and FL190. Thence. . .

**TAKEOFF RUNWAY 13:** Climb on heading 133° or as assigned for RADAR vectors to cross AGERS between 8000 and FL190. Thence. . .

**TAKEOFF RUNWAYS 27L/R:** Climb on heading 273° or as assigned for RADAR vectors to cross AGERS between 8000 and FL190. Thence. . .

**TAKEOFF RUNWAY 31:** Climb on heading 313° or as assigned for RADAR vectors to cross AGERS between 8000 and FL190. Thence. . .

. . .on track 355° to cross PERTS at or above 13000, then on track 354° to cross AARPS at or above 15000. Then on transition. Maintain ATC assigned altitude, expect clearance to filed altitude within 10 minutes after departure.

ONEWY TRANSITION (AARPS1.ONEWY)

# AARPS ONE DEPARTURE (RNAV)

SE-3, 04 NOV 2021 to 02 DEC 2021

SE-3, 04 NOV 2021 to 02 DEC 2021