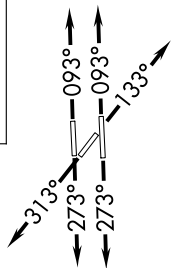


MHTO ONE DEPARTURE (RNAV)

**TOP ALTITUDE:
ASSIGNED BY ATC**

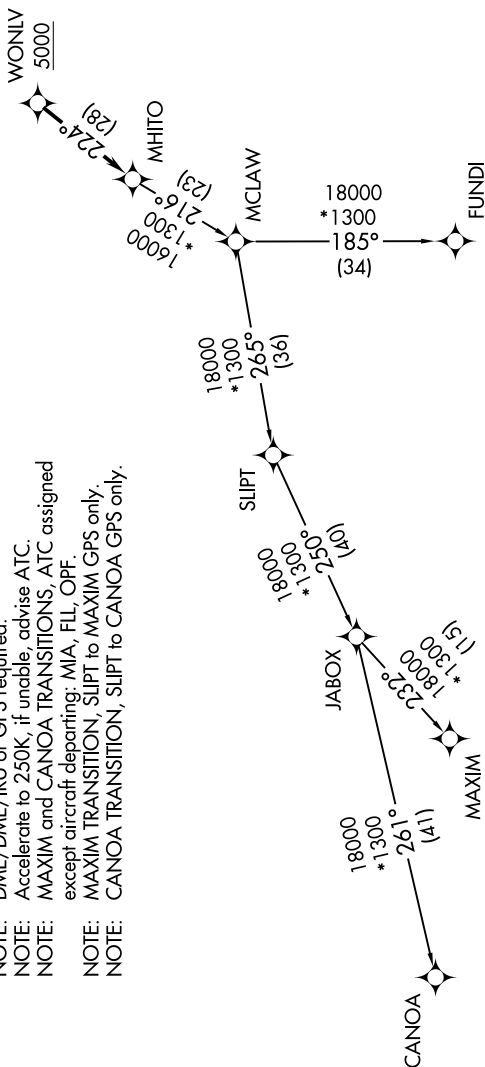


TAKEOFF MINIMUMS

- Rwy 9L: Standard with minimum climb of 500' per NM to 1300.
- Rwy 9R: Standard with minimum climb of 500' per NM to 1500.
- Rwy 13: Standard with minimum climb of 500' per NM to 1800.
- Rwy 27L: Standard with minimum climb of 500' per NM to 1900.
- Rwy 27R: Standard with minimum climb of 500' per NM to 1700.
- Rwy 31: Standard with minimum climb of 500' per NM to 1400.

- ATIS 124.0
- CLNC DEL 133.0
- GND CON 121.7
- TAMiami TOWER * 118.9 (CTAF)
- MIAMI DEP CON 125.5 354.1

- NOTE: RNAV 1.
- NOTE: RADAR required.
- NOTE: Jet aircraft only.
- NOTE: DME/DME/IRU or GPS required.
- NOTE: Accelerate to 250K if unable, advise ATC.
- NOTE: MAXIM and CANOA TRANSITIONS, ATC assigned except aircraft departing: MIA, FLL, OPF.
- NOTE: MAXIM TRANSITION, SLIPT to MAXIM GPS only.
- NOTE: CANOA TRANSITION, SLIPT to CANOA GPS only.



(NARRATIVE ON FOLLOWING PAGE)

NOTE: Chart not to scale.