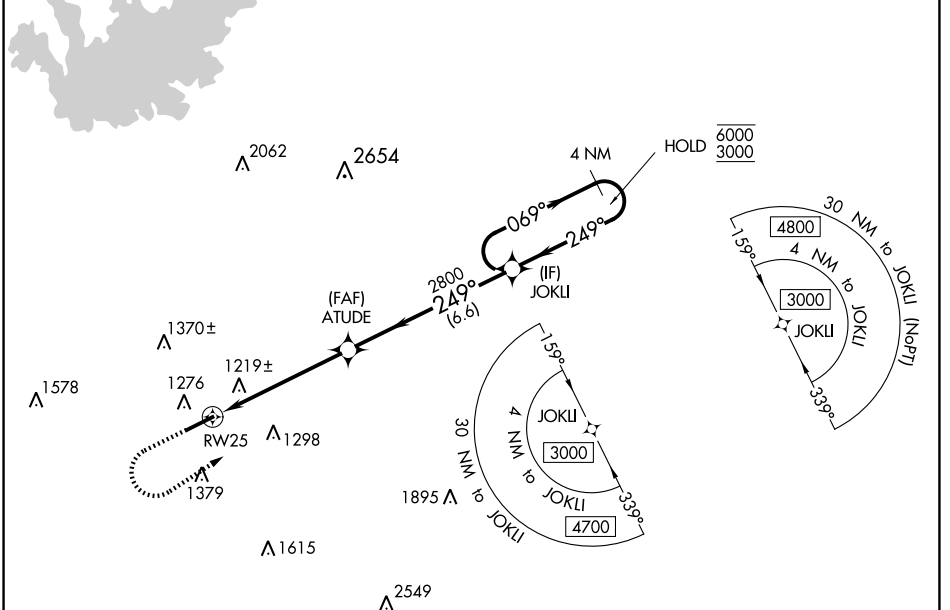


WAAS CH <b>82021</b> <b>W25A</b>	APP CRS <b>249°</b>	Rwy Idg TDZE Apt Elev	<b>6001</b> <b>1038</b> <b>1062</b>
--	------------------------	-----------------------------	---

# RNAV (GPS) RWY 25

GWINNETT COUNTY-BRISCOE FLD (LZU)

RNP APCH.		MALSR		MISSED APPROACH: Climb to 1600 then climbing left turn to 3000 direct JOKLI and hold.		
<p>▼ For uncompensated Baro-VNAV systems, LNAV/VNAV NA below -17°C or above 54°C. For inop ALS, increase LNAV Cat C/D visibility to 1½ SM.</p>						
ATIS <b>132.275</b>	ATLANTA APP CON <b>126.975 239.275</b>	GWINNETT TOWER ★ <b>124.1</b> (CTAF)	GND CON <b>121.8</b>	CLNC DEL <b>121.8</b>	CLNC DEL <b>134.0</b> (When twr closed)	UNICOM <b>123.05</b>



SE-4, 04 NOV 2021 to 02 DEC 2021

SE-4, 04 NOV 2021 to 02 DEC 2021

ELEV 1062	TDZE 1038
-----------	-----------

1600	3000	JOKLI	4 NM Holding Pattern
* LNAV only		ATUDE 2800	JOKLI
* 1.4 NM to RWY 25		2800	6000
1.4 NM		4 NM	6.6 NM
249° to RWY 25	069°	249°	GP 3.00° TCH 48

CATEGORY	A	B	C	D
LPV DA		1238-½	200 (200-½)	
LNAV/VNAV DA		1477-¾	439 (500-¾)	
LNAV MDA	1520-½	482 (500-½)	1520-1	482 (500-1)
CIRCLING	1640-1	578 (600-1)	1680-1¾ 618 (700-1¾)	1700-2 638 (700-2)

HIRL Rwy 7-25