

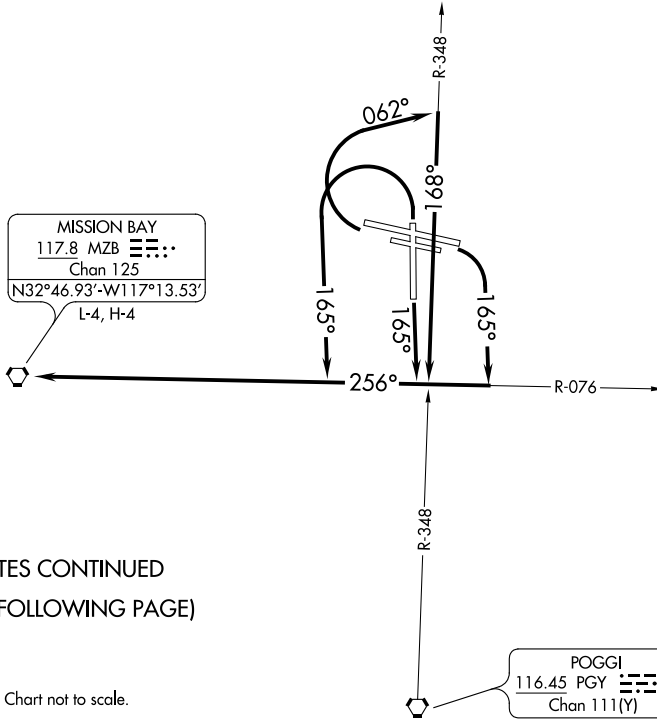
MISSION BAY TWO DEPARTURE (OBSTACLE)

GILLESPIE FLD (S'E'E)
SAN DIEGO/EL CAJON, CALIFORNIA

TAKEOFF MINIMUMS

- Rwy 9L: 900-2¾ with minimum climb of 400' per NM to 3600, or 4400-3 for VCOA.
- Rwy 9R: 900-2¾ with minimum climb of 405' per NM to 3600, or 4400-3 for VCOA.
- Rwy 17: Standard with minimum climb of 440' per NM to 1800, or 4400-3 for VCOA.
- Rwys 27L/R: Standard with minimum climb of 500' per NM to 2000, or 4400-3 for VCOA.
- Rwy 35: Standard with minimum climb of 360' per NM to 1900, or 4400-3 for VCOA.

GILLESPIE TOWER *
120.7 257.8
SOCAL DEP CON
124.35 279.625



(NOTES CONTINUED
ON FOLLOWING PAGE)

DEPARTURE ROUTE DESCRIPTION

- TAKEOFF RUNWAYS 9L/R: Climbing right turn on heading 165°, thence
 - TAKEOFF RUNWAY 17: Climb on heading 165°, thence
 - TAKEOFF RUNWAYS 27L/R: Climbing right turn on heading 062° and on PGY R-348, thence
 - TAKEOFF RUNWAY 35: Climbing left turn on heading 165°, thence
- on MVB R-076 to MVB VORTAC.

ALL RUNWAYS: Obtain ATC approval for VCOA when requesting IFR clearance.
Climb in visual conditions to cross Gillespie Fld at or above 4600 before proceeding on assigned route of flight.