

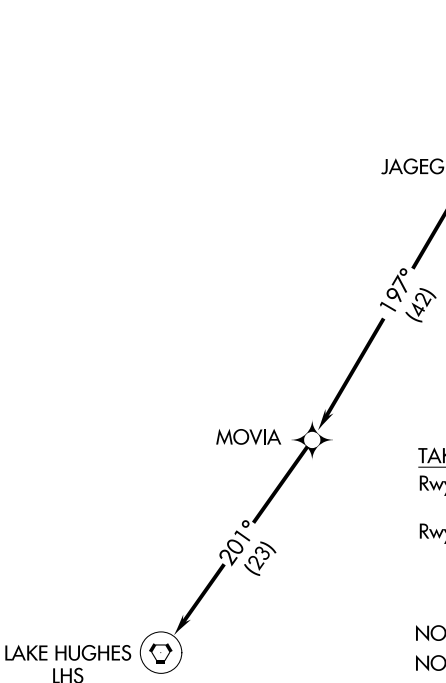
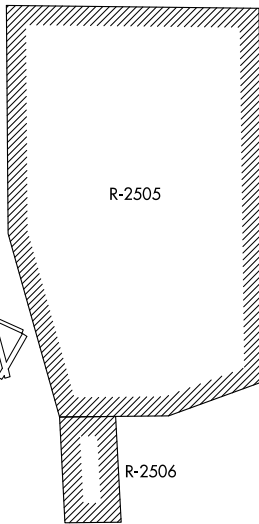
(LHS2.LHS) 16091

SL-5417 (FAA)

LAKE HUGHES TWO DEPARTURE (OBSTACLE) (RNAV)

INYOKERN (IYK)
INYOKERN, CALIFORNIA

JOSHUA DEP CON
133.65 348.7



TAKEOFF MINIMUMS
 Rwy 20: Standard with a minimum climb of 240'
 per NM to 7000.
 Rwys 2, 15, 33, 10, 28: NA-restricted airspace.

NOTE: GPS required.
 NOTE: RNAV 1.

NOTE: Chart not to scale.

DEPARTURE ROUTE DESCRIPTION

TAKEOFF RUNWAY 20: Climb direct JAGEG then continue climb to 8000 via 197° track to MOVIA and 201° track to LHS VORTAC. Thence via assigned route and altitude.

TAKEOFF RUNWAYS 2, 33, 15, 10, and 28: NA.

SW-3, 04 NOV 2021 to 02 DEC 2021

SW-3, 04 NOV 2021 to 02 DEC 2021

LAKE HUGHES TWO DEPARTURE (OBSTACLE) (RNAV)
 (LHS2.LHS) 30SEP04

INYOKERN, CALIFORNIA
 INYOKERN (IYK)