

LOC I-GVQ 108.9	APP CRS 282°	Rwy Idg TDZE Apt Elev	5499 911 913
---------------------------	------------------------	-----------------------------	---

ILS or LOC RWY 28

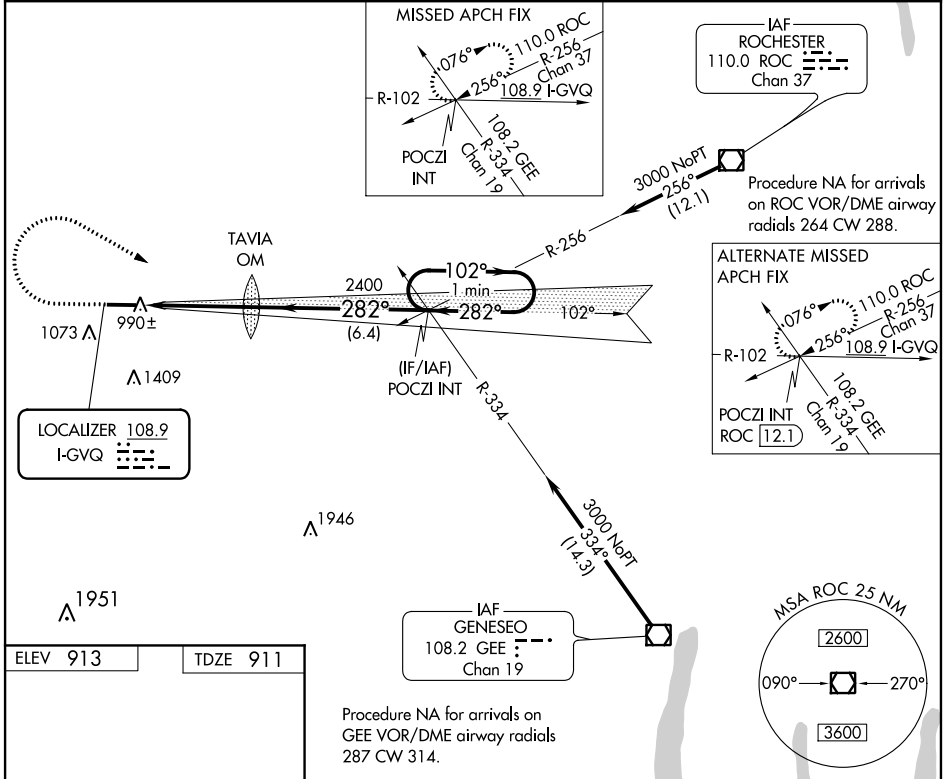
GENESEE COUNTY (GVQ)

NA When local altimeter setting not received, use Rochester altimeter setting and increase all DA 102 feet and all MDA 120 feet; increase S-LOC 28 Cats C/D and Circling Cat D visibility ¼ mile. Autopilot coupled approach NA below 1433.

MALSR

MISSED APPROACH: Climb to 1500 then climbing right turn to 3000 via heading 130° and I-GVQ east course to POCZI INT and hold.

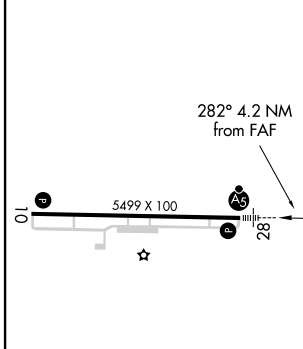
AWOS-3PT 127.525	ROCHESTER APP CON 123.7 322.3	CLNC DEL 121.8	UNICOM 122.7 (CTAF) 0
----------------------------	---	--------------------------	--



NE-2, 04 NOV 2021 to 02 DEC 2021

NE-2, 04 NOV 2021 to 02 DEC 2021

ELEV 913	TDZE 911
----------	----------



REIL Rwy 10 **0**

HIRL Rwy 10-28 **0**

FAF to MAP 4.2 NM

Knots	60	90	120	150	180
Min:Sec	4:12	2:48	2:06	1:41	1:24

Procedure NA for arrivals on GEE VOR/DME airway radials 287 CW 314.

1500 3000

hdg 130°

I-GVQ E crs

POCZI INT

VGSI and ILS glidepath not coincident (VGSI Angle 3.00°/TCH 62).

One Minute Holding Pattern

TAVIA OM 2307

POCZI INT

102° 3000

282°

2400

GS 3.00° TCH 56

CATEGORY	A	B	C	D
S-ILS 28	1111-½ 200 (200-½)			
S-LOC 28	1260-½ 349 (400-½)			1260-¾ 349 (400-¾)
CIRCLING	1380-1 467 (500-1)		1380-1½ 467 (500-1½) 1480-2 567 (600-2)	