

WAAS CH <b>82421</b> <b>W10A</b>	APP CRS <b>102°</b>	Rwy Idg TDZE <b>914</b> Apt Elev <b>914</b>	<b>5499</b>
--	------------------------	---	-------------

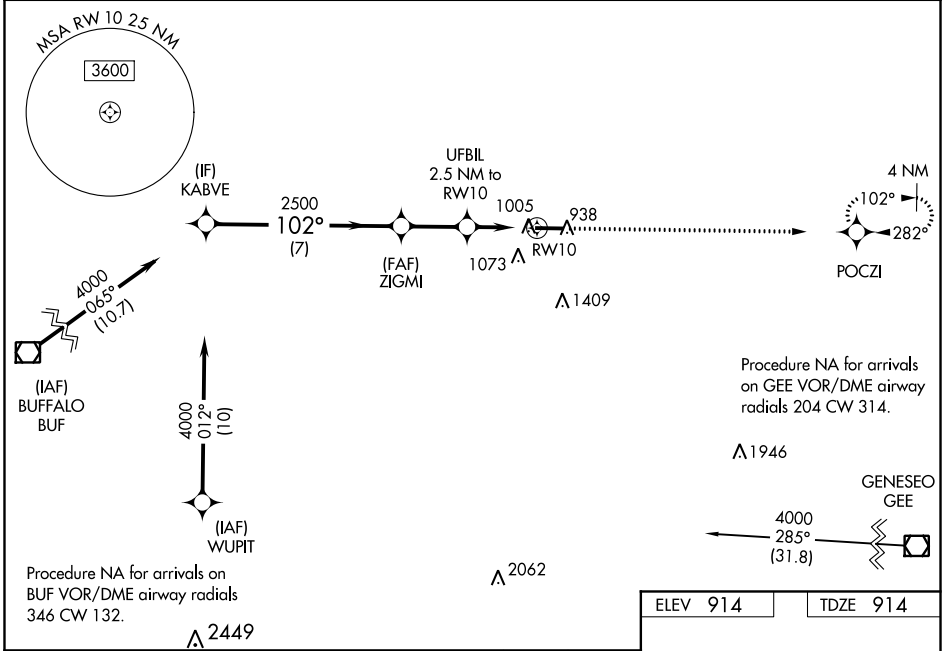
# RNAV (GPS) RWY 10

GENESEE COUNTY (GVQ)

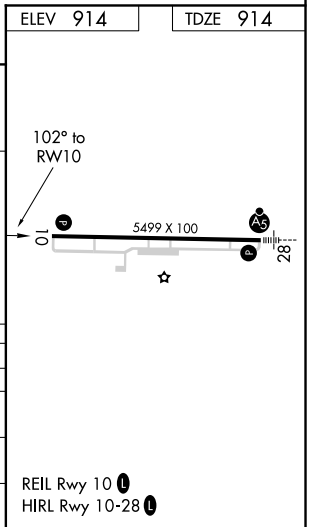
**NA** For uncompensated Baro-VNAV systems, LNAV/VNAV NA below -16°C (4°F) or above 38°C (100°F). DME/DME RNP-0.3 NA. When local altimeter setting not received, use Rochester altimeter setting and increase LPV DA all Cats to 1214, LNAV/VNAV DA all Cats to 1268, and all MDA 120 feet; increase LPV all Cats and Circling Cat D visibility ¼ mile, increase LNAV/VNAV all Cats and LNAV Cats C/D visibility ⅓ mile. Baro-VNAV and VDP NA when using Rochester altimeter setting.

**MISSED APPROACH:**  
Climb to 3000 direct POCZI and hold.

AWOS-3PT <b>127.525</b>	ROCHESTER APP CON <b>123.7 322.3</b>	CLNC DEL <b>121.8</b>	UNICOM <b>122.7 (CTAF) 0</b>
----------------------------	---	--------------------------	---------------------------------



KABVE		ZIGMI		UFBIL 2.5 NM to RW10		POCZI	
4000		2500		* 1740		* LNAV only.	
GP 3.00° TCH 40		2500		* 1 NM to RW10		102° to RW10	
7 NM		2.4 NM		1.5 NM		5499 X 100	
CATEGORY	A	B	C	D			
LPV DA	1114-¾		200 (200-¾)				
LNAV/VNAV DA	1168-⅞		254 (300-⅞)				
LNAV MDA	1260-1		346 (400-1)				
CIRCLING	1380-1 466 (500-1)		1380-1½ 466 (500-1½)		1480-2 566 (600-2)		



NE-2, 04 NOV 2021 to 02 DEC 2021

NE-2, 04 NOV 2021 to 02 DEC 2021