

WAAS CH 86311 W28A	APP CRS 282°	Rwy Idg TDZE 911 Apt Elev 913	5499
--	------------------------	---	-------------

RNAV (GPS) RWY 28

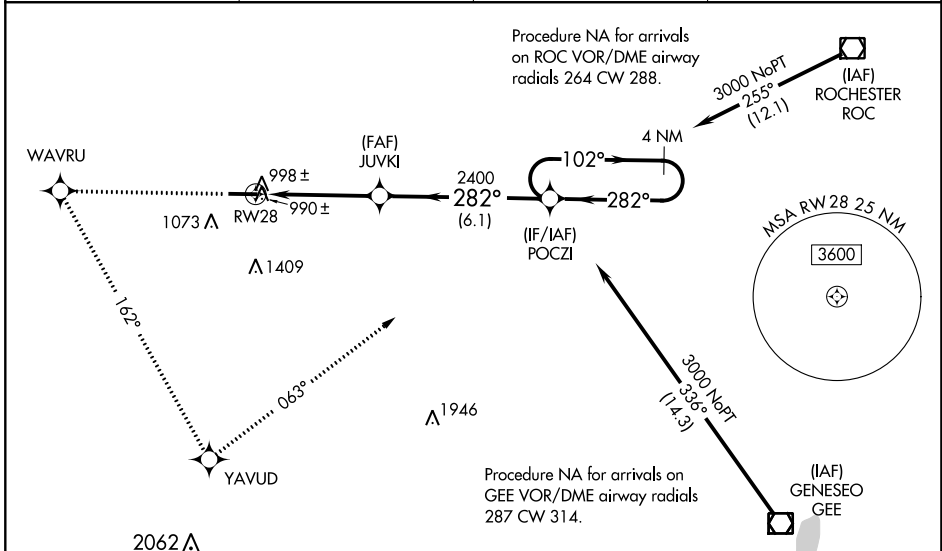
GENESEE COUNTY (GVQ)

NA For uncompensated Baro-VNAV systems, LNAV/VNAV NA below -16°C (4°F) or above 46°C (114°F). DME/DME RNP-0.3 NA. When local altimeter setting not received, use Rochester altimeter setting and increase all DA 102 feet and all MDA 120 feet; increase LPV all Cats visibility 1/4 mile, LNAV/VNAV all Cats visibility 1/2 mile, LNAV Cat C and Circling Cat D visibility 1/4 mile. Baro-VNAV and VDP NA when using Rochester altimeter setting. For inoperative MALSRS increase LNAV Cat D visibility to 1/4 mile. For inoperative MALSRS, when using Rochester altimeter setting increase LPV visibility all Cats to 1/4 mile.

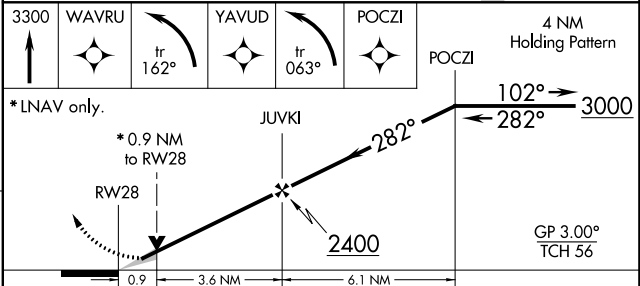
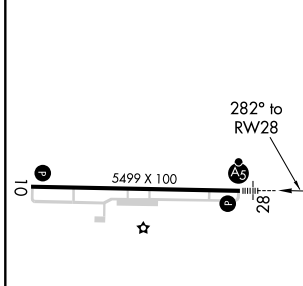


MISSED APPROACH: Climb to 3300 direct WAVRU and left turn via 162° track to YAVUD and left turn via 063° track to POCZI and hold.

AWOS-3PT 127.525	ROCHESTER APP CON 123.7 322.3	CLNC DEL 121.8	UNICOM 122.7 (CTAF)
----------------------------	---	--------------------------	-------------------------------



ELEV 913	TDZE 911
----------	----------



CATEGORY	A	B	C	D
LPV DA		1161-1/2	250 (300-1/2)	
LNAV/VNAV DA		1364-1	453 (500-1)	
LNAV MDA		1260-1/2	349 (400-1/2)	1260-1 349 (400-1)
CIRCLING	1380-1	467 (500-1)	1380-1 1/2 467 (500-1 1/2)	1480-2 567 (600-2)

NE-2, 04 NOV 2021 to 02 DEC 2021

NE-2, 04 NOV 2021 to 02 DEC 2021