

WAAS CH 87030 W13A	APP CRS 135°	Rwy Idg TDZE Apt Elev	5000 1203 1204
---------------------------------	------------------------	-----------------------------	---

RNAV (GPS) RWY 13

ARTHUR N NEU (CIN)

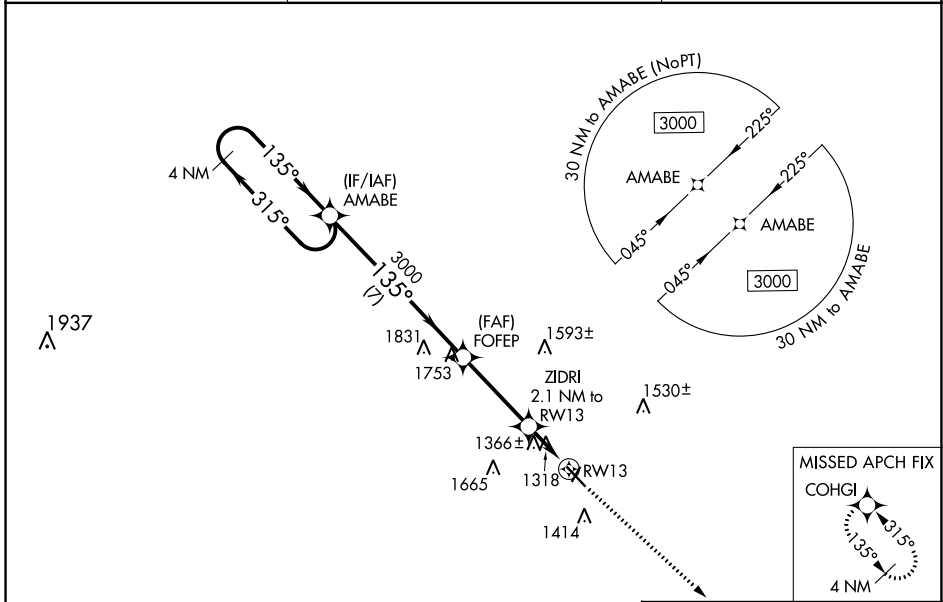
⚠ For uncompensated Baro-VNAV systems, LNAV/VNAV NA below -17°C (2°F) or above 54°C (130°F). DME/DME RNP-0.3 NA. Baro-VNAV and VDP NA when using Audubon altimeter setting. When local altimeter setting not received, use Audubon altimeter setting and increase all DA 62 feet and all MDA 80 feet and increase LNAV/VNAV all Cats visibility and LNAV Cat C visibility ¼ mile.

MISSED APPROACH: Climb to 3000 direct COHGI and hold.

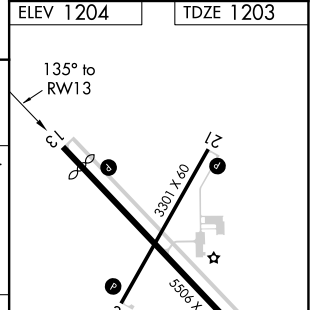
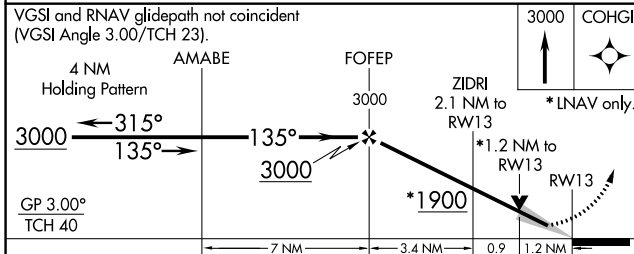
AWOS-3
118.025

MINNEAPOLIS CENTER
134.0 288.3

UNICOM
122.8 (CTAF) 0



ELEV 1204 TDZE 1203



CATEGORY	A	B	C	D
LPV DA	1453-1	250 (300-1)		NA
LNAV/VNAV DA	1607-1 $\frac{3}{8}$	404 (500-1 $\frac{3}{8}$)		NA
LNAV MDA	1620-1	417 (500-1)	1620-1 $\frac{1}{8}$ 417 (500-1 $\frac{1}{8}$)	NA
CIRCLING	1720-1	516 (600-1)	1720-1 $\frac{1}{2}$ 516 (600-1 $\frac{1}{2}$)	NA

MIRL Rwy 13-31 and 3-21
REIL Rwy 3, 13, 21 and 31

NC-3, 04 NOV 2021 to 02 DEC 2021

NC-3, 04 NOV 2021 to 02 DEC 2021