

WAAS CH <b>49130</b> <b>W31A</b>	APP CRS <b>315°</b>	Rwy Idg TDZE <b>1203</b> Apt Elev <b>1204</b>	<b>5506</b>
--	------------------------	---	-------------

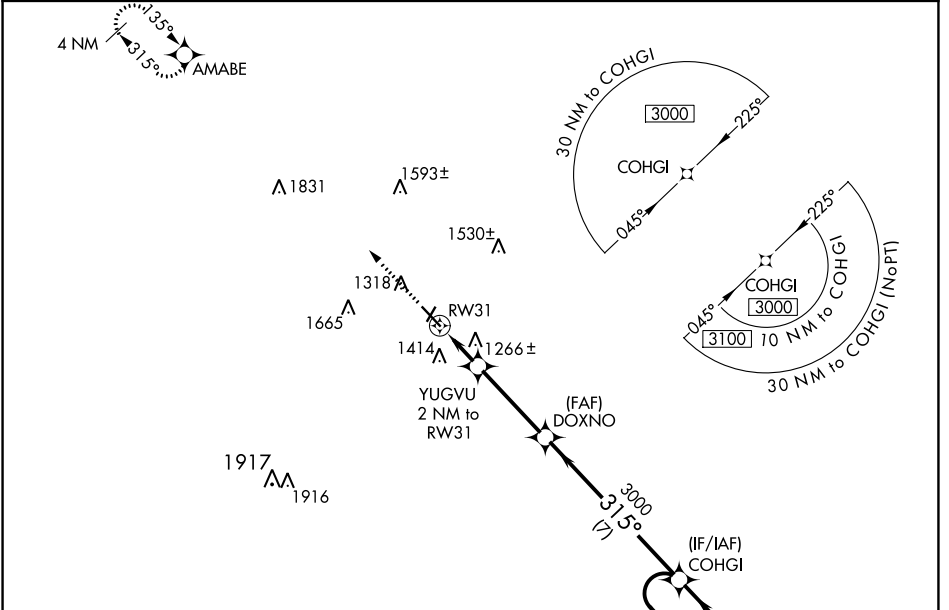
# RNAV (GPS) RWY 31

ARTHUR N NEU (CIN)

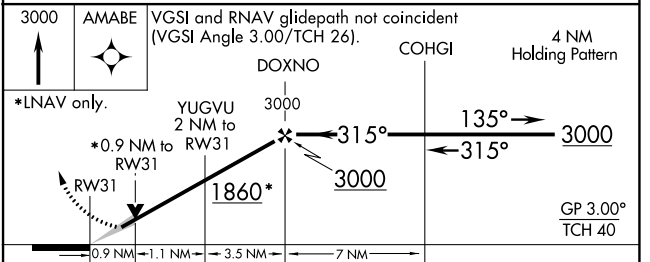
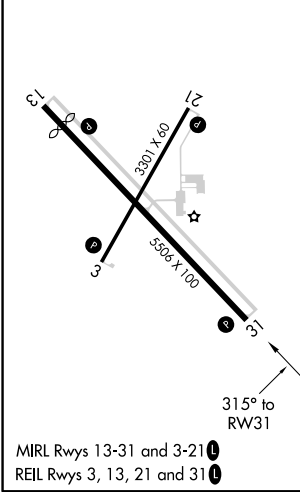
**⚠** For uncompensated Baro-VNAV systems, LNAV/VNAV NA below -17°C (2°F) or above 54°C (130°F). DME/DME RNP-0.3 NA. Baro-VNAV and VDP NA when using Audubon altimeter setting. When local altimeter setting not received, use Audubon altimeter setting and increase all DA 62 feet and all MDA 80 feet and increase LNAV Cat C visibility 1/8 mile.

**⚠** MISSED APPROACH: Climb to 3000 direct AMABE and hold.

AWOS-3 <b>118.025</b>	MINNEAPOLIS CENTER <b>134.0 288.3</b>	UNICOM <b>122.8 (CTAF) 0</b>
--------------------------	--	---------------------------------



ELEV 1204	TDZE 1203
-----------	-----------



CATEGORY	A	B	C	D
LPV DA	1453-1 250 (300-1)			NA
LNAV/VNAV DA	1453-1 250 (300-1)			NA
LNAV MDA	1520-1 317 (400-1)			NA
CIRCLING	1720-1	516 (600-1)	1720-1½ 516 (600-1½)	NA

NC-3, 04 NOV 2021 to 02 DEC 2021

NC-3, 04 NOV 2021 to 02 DEC 2021