

RNAV (GPS) RWY 26R

CHINO (CNO)

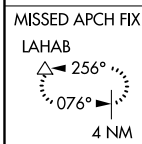
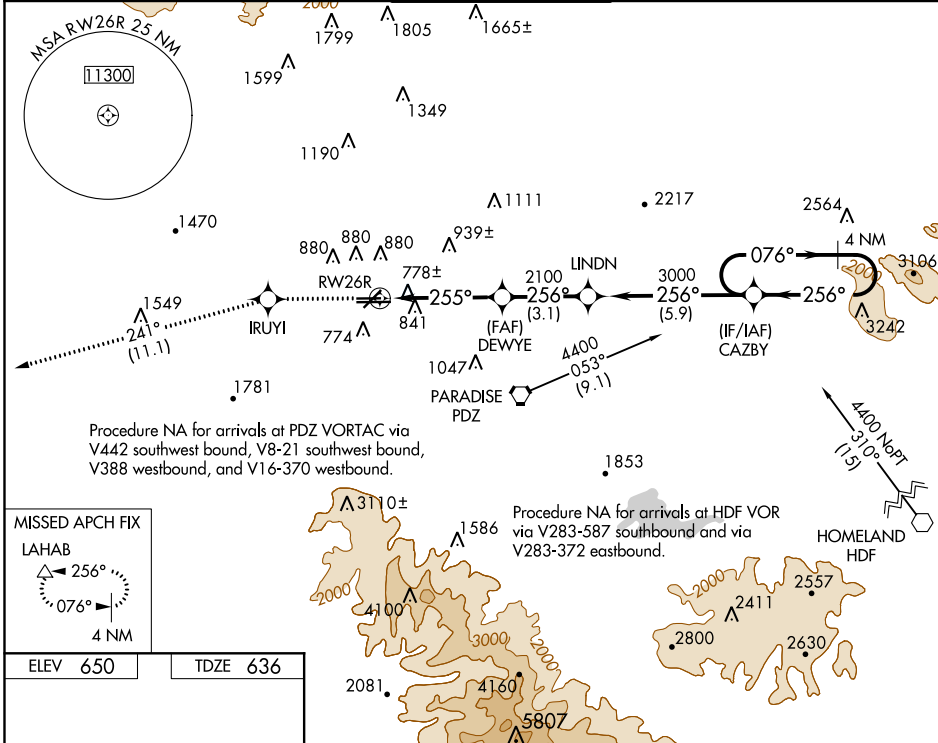
WAAS CH 97320 W26A	APP CRS 255°	Rwy Idg TDZE Apt Elev	4858 636 650
--	------------------------	-----------------------------	---

RNP APCH-GPS.

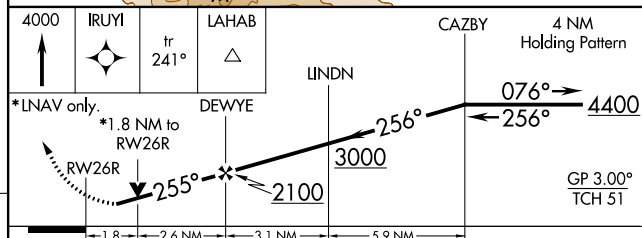
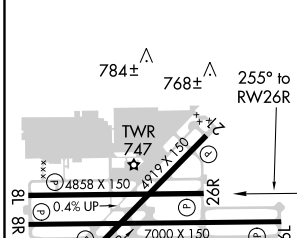
For uncompensated Baro-VNAV systems, LNAV/VNAV NA below -16°C or above 54°C. Helicopter visibility reduction below ¼ SM NA.

MISSED APPROACH: Climb to 4000 direct IRUYI and via 241° track to LAHAB and hold.

ATIS 125.85	SOCAL APP CON 135.4 318.2	CHINO TOWER * 118.5 (CTAF)	GND CON 121.6	UNICOM 122.95
-----------------------	-------------------------------------	--------------------------------------	-------------------------	-------------------------



ELEV 650	TDZE 636
----------	----------



CATEGORY	A	B	C	D
LPV DA		1030-1¼	394 (400-1¼)	
LNAV/VNAV DA		1177-2	541 (600-2)	
LNAV MDA	1260-1	624 (700-1)	1260-1¾ 624 (700-1¾)	1260-2 624 (700-2)
CIRCLING		1260-1¾	610 (700-1¾)	1340-2¼ 690 (700-2¼)

REIL Rwy 3 and 21
MIRL Rwy 3-21 and 8R-26L
HIRL Rwy 8L-26R

SW-3, 04 NOV 2021 to 02 DEC 2021

SW-3, 04 NOV 2021 to 02 DEC 2021