


LOC I-BJC	APP CRS	Rwy Idg	30R	30L
111.7	295°	TDZE	9000	7002
		Apt Elev	5599	5628
			5673	5673

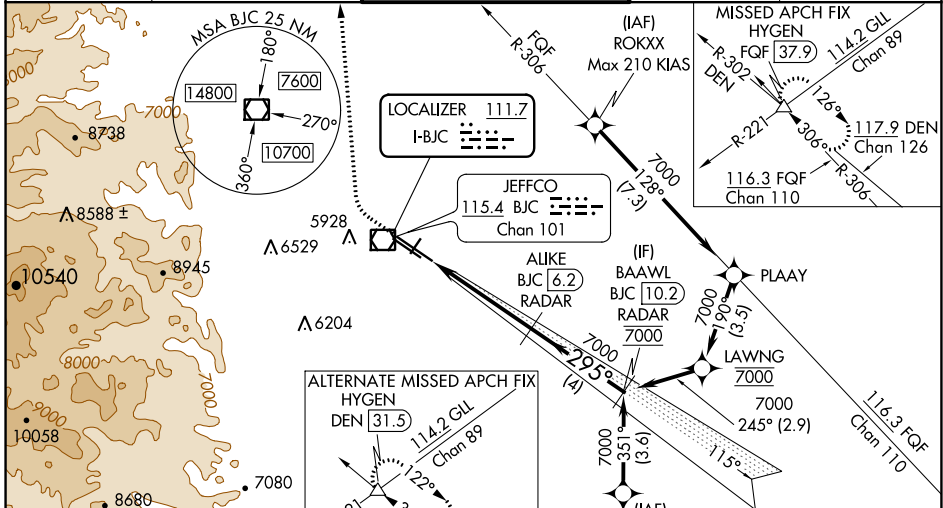
ILS or LOC RWY 30R

ROCKY MOUNTAIN METRO (BJC)

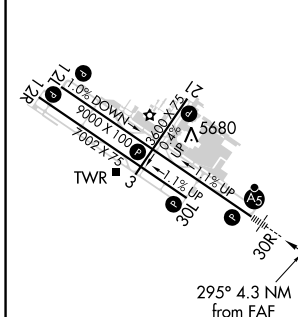
NA DME from BJC VOR/DME. Simultaneous reception of I-BJC and BJC DME required. DME or RADAR required. When local altimeter setting not received, use Denver Intl altimeter setting and increase all DA 82 feet and all MDA 100 feet. Increase S-ILS 30R all Cats visibility 3/8 mile. Increase S-LOC 30R Cats B/C/D visibility 1/4 mile. Increase Sidestep R30L Cats A/B visibility 1/4 mile, Cats C/D visibility 1/2 mile and Circling Cat C visibility 1/4 mile. For inoperative MALS/R, increase S-ILS 30R all Cats visibility 1/2 mile and increase S-LOC 30R Cat C/D visibility 3/8 mile. For inoperative MALS/R, when using Denver Intl altimeter setting, increase S-ILS 30R all Cats visibility to 2 1/4 miles. Increase S-LOC 30R Cat B visibility to 1 1/4 mile and Cats C/D visibility to 2 1/2 miles. For inoperative MALS/R, when using Denver Intl altimeter setting, increase S-ILS 30R* all Cats visibility to 1 mile.
 *Missed approach requires a minimum climb of 240 feet per NM to 9700.

MALS/R

 MISSED APPROACH: Climb to 6380 then climbing right turn to 10200 on heading 360° and on FQF VORTAC R-306 to HYGEN INT/FQF 37.9 DME and hold, continue climb-in-hold to 10200.

ATIS	DENVER APP CON	METRO TOWER *	GND CON	CLNC DEL
126.25	125.12 263.02	118.6 (CTAF) 233.7	121.7	132.6



ELEV 5673	D TDZE 30R 5599
	TDZE 30L 5628

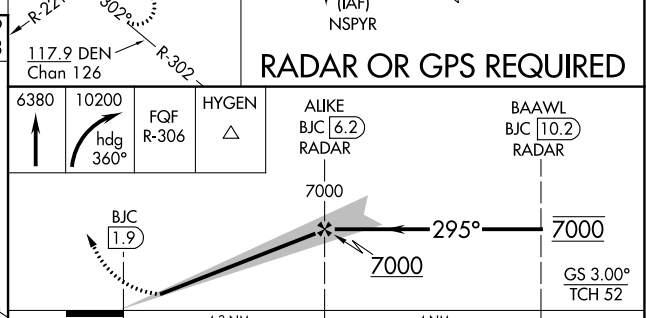


HIRL Rwy's 12L-30R **1**
 MIRL Rwy's 3-21 and 12R-30L **1**
 REIL Rwy's 12L, 12R and 30L **1**

FAF to MAP 4.3 NM

Knots	60	90	120	150	180
Min:Sec	4:18	2:52	2:09	1:43	1:26

C CIRCLING



CATEGORY	A	B	C	D
S-ILS 30R		* 5799-1/2	200 (200-1/2)	
S-ILS 30R		6124-1 3/8	525 (500-1 3/8)	
S-LOC 30R	6300-1/2	701 (700-1/2)	6300-1 3/8	701 (700-1 3/8)
SIDESTEP 30L	6340-1	712 (700-1)	6340-2	6340-2 1/4
			712 (700-2)	712 (700-2 1/4)
			6360-2	6860-3
			687 (700-2)	1187 (1200-3)

SW-1, 04 NOV 2021 to 02 DEC 2021

SW-1, 04 NOV 2021 to 02 DEC 2021