

WAAS CH <b>97499</b>	APP CRS <b>181°</b>	Rwy Idg TDZE <b>5008</b> <b>331</b>	Apt Elev <b>331</b>
-------------------------	------------------------	---	------------------------

# RNAV (GPS) RWY 18

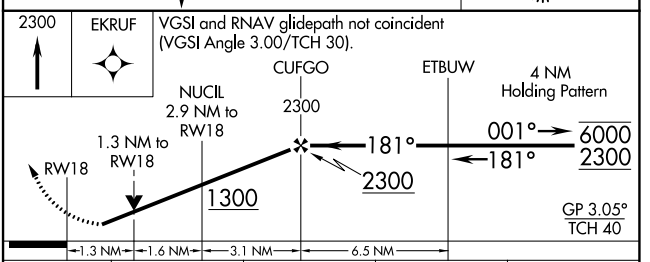
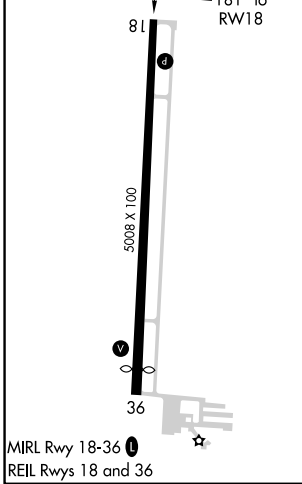
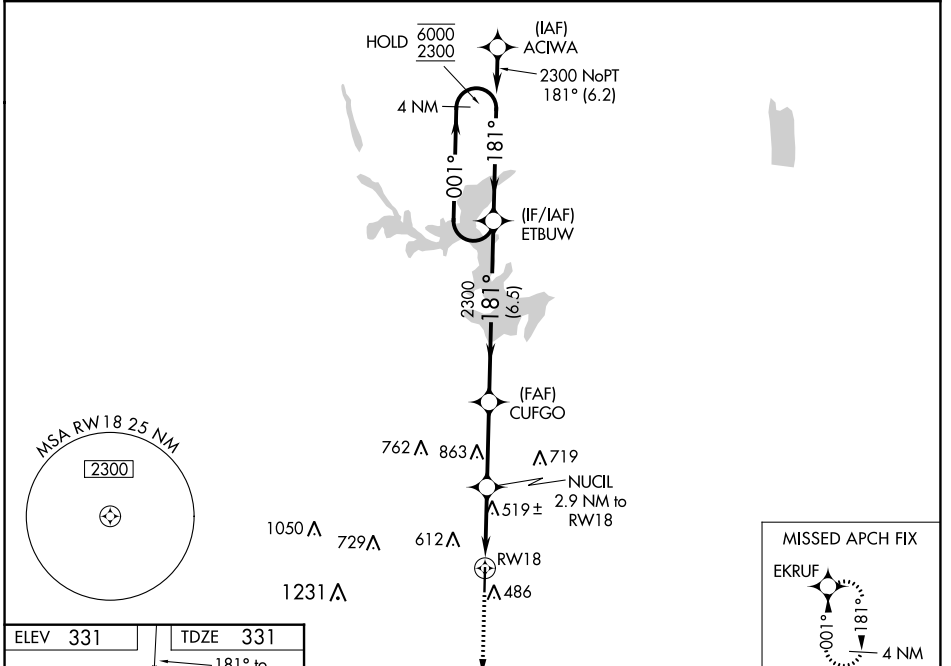
POPLAR BLUFF RGNL BUSINESS (POI<sup>F</sup>)

RNP APCH-GPS.

**▼** Rwy 18 helicopter visibility reduction below 3/4 SM NA. For uncompensated Baro-VNAV systems, LNAV/VNAV NA below -23°C or above 54°C.

**MISSED APPROACH:** Climb to 2300 direct EKRUF and hold.

ASOS <b>124.225</b>	MEMPHIS CENTER <b>120.075 289.4</b>	UNICOM <b>123.0 (CTAF) 0</b>
------------------------	--	---------------------------------



CATEGORY	A	B	C	D
LPV DA		634-7/8	303 (400-7/8)	
LNAV/VNAV DA		675-1	344 (400-1)	
LNAV MDA	800-1	469 (500-1)	800-1 3/8	469 (500-1 3/8)
CIRCLING	840-1 509 (600-1)	920-1 589 (600-1)	920-1 1/2 589 (600-1 1/2)	980-2 649 (700-2)

NC-3, 04 NOV 2021 to 02 DEC 2021

NC-3, 04 NOV 2021 to 02 DEC 2021