

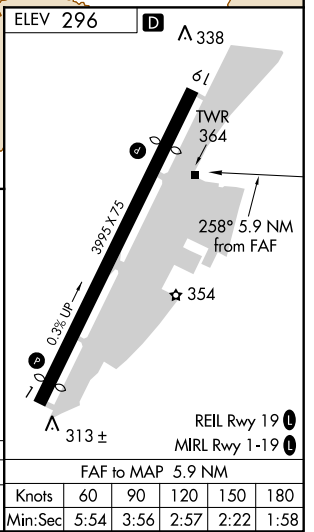
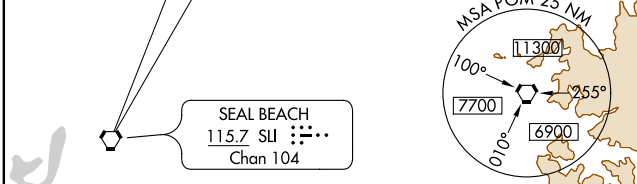
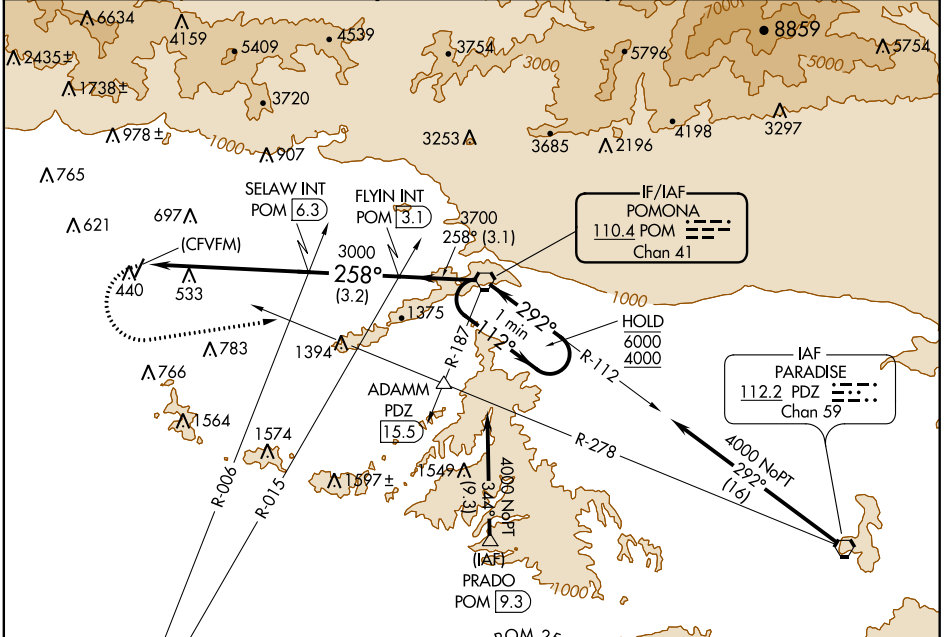
VORTAC POM 110.4 Chan 41	APP CRS 258°	Rwy Idg TDZE Apt Elev N/A N/A 296
--	------------------------	---

VOR-A
SAN GABRIEL VALLEY (EMT)

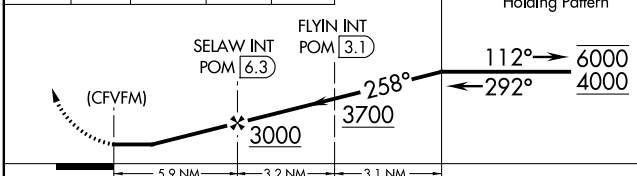
⚠ Circling Rwy 1 NA at night. When local altimeter setting not received, use Ontario Int'l altimeter setting and increase all MDA 160 feet.

⚠ MISSED APPROACH: Climbing left turn to 2500 on heading 070° and PDZ VORTAC R-278 to ADAMM INT/PDZ 15.5 DME then continue climb to 4000 to PDZ VORTAC.

ATIS 118.75	SOCAL APP CON 125.5 318.2	EL MONTE TOWER ★ 121.2 (CTAF) 0	GND CON 125.9	UNICOM 122.95
-----------------------	-------------------------------------	---	-------------------------	-------------------------



2500 hdg 070°	PDZ R-278	ADAMM △	4000 ↑	PDZ ⬡
------------------	-----------	---------	--------	-------



CATEGORY	A	B	C	D
C CIRCLING	1280-1¼ 984 (1000-1¼)	1280-1½ 984 (1000-1½)	1280-3 984 (1000-3)	1320-3 1024 (1100-3)

FAF to MAP 5.9 NM					
Knots	60	90	120	150	180
Min:Sec	5:54	3:56	2:57	2:22	1:58

SW-3, 04 NOV 2021 to 02 DEC 2021

SW-3, 04 NOV 2021 to 02 DEC 2021