

APP CRS	Rwy Idg	3829
214°	TDZE	235
	Apt Elev	235

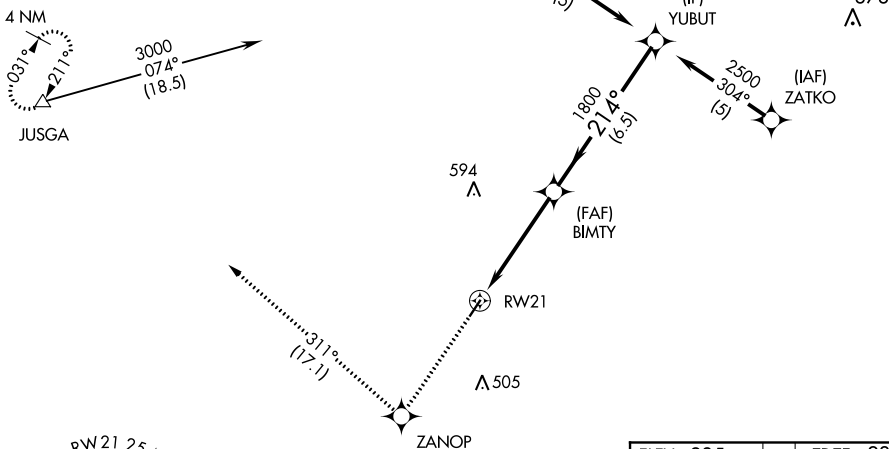
RNAV (GPS) RWY 21

WARREN MUNI (3M9)

RNP APCH - GPS.		MISSED APPROACH: Climb to 3000 direct ZANOP and on track 311° to JUSGA and hold.
▼ ▲ NA	Use Monticello altimeter setting. Procedure NA at night.	

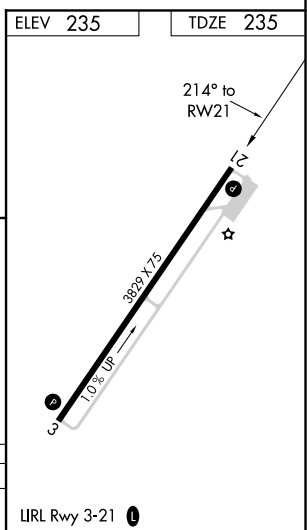
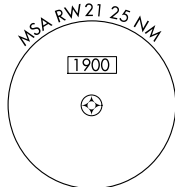
LLQ ASOS 133.325	MEMPHIS CENTER 135.875 269.35	CTAF 122.9
----------------------------	---	----------------------

Procedure NA for arrivals at JUSGA on V69 southwest bound.



SC-1, 04 NOV 2021 to 02 DEC 2021

SC-1, 04 NOV 2021 to 02 DEC 2021



3000	ZANOP	tr 311°	JUSGA	VGSI and descent angles not coincident (VGSI Angle 3.50/ TCH 40).	YUBUT

CATEGORY	A	B	C	D
LNAV MDA	720-1	485 (500-1)	720-1½ 485 (500-1½)	NA

LIRL Rwy 3-21