

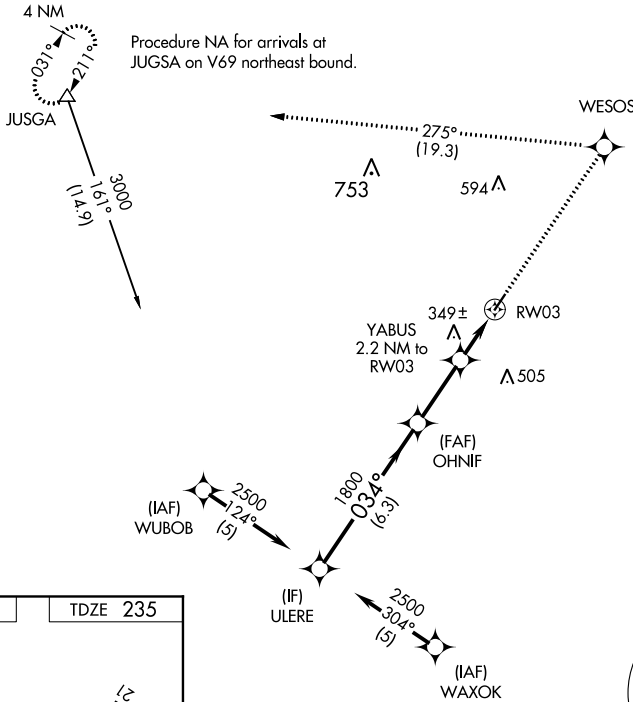
APP CRS <b>034°</b>	Rwy Idg <b>3829</b>
	TDZE <b>235</b>
	Apt Elev <b>235</b>

# RNAV (GPS) RWY 3

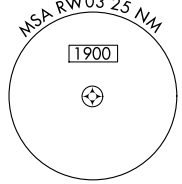
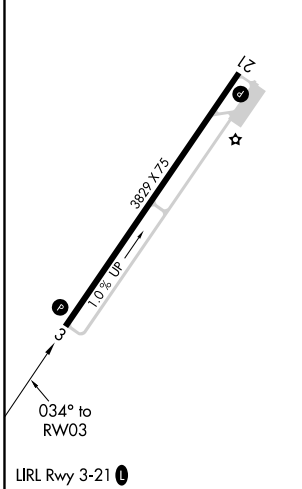
WARREN MUNI (3M9)

RNP APCH - GPS.	MISSED APPROACH: Climb to 3000 direct WESOS and on track 275° to JUGSA and hold.
▼ ▲ NA Use Monticello altimeter setting. ▲ NA Procedure NA at night.	

LLQ ASOS <b>133.325</b>	MEMPHIS CENTER <b>135.875 269.35</b>	CTAF <b>122.9 0</b>
----------------------------	---	------------------------



ELEV 235	TDZE 235
----------	----------



VGSIs and descent angles not coincident (VGSIs Angle 3.00/TCH 40).			
ULERE	OHNIF	YABUS 2.2 NM to RW03	RW03
2500	1800	920	
6.3 NM		2.7 NM	2.2 NM
3000	WESOS	tr 275°	JUGSA
CATEGORY A		CATEGORY B	
LNAV MDA 660-1		660-1 1/4	
425 (500-1)		425 (500-1 1/4)	
		NA	

SC-1, 04 NOV 2021 to 02 DEC 2021

SC-1, 04 NOV 2021 to 02 DEC 2021