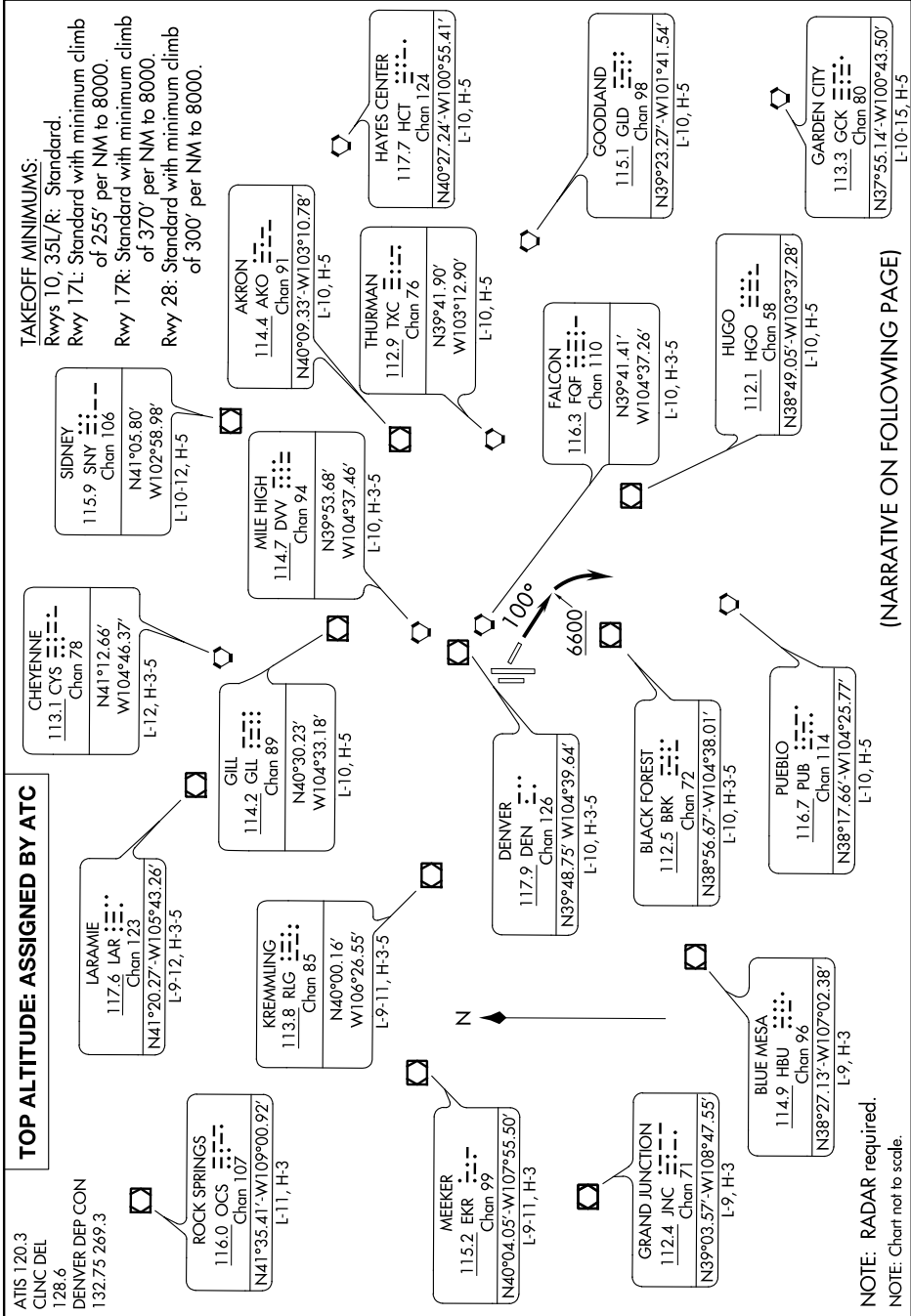


# DENVER TWO DEPARTURE

AL-5715 (FAA)

CENTENNIAL (APA)  
DENVER, COLORADO

SW-1, 04 NOV 2021 to 02 DEC 2021



### TOP ALTITUDE: ASSIGNED BY ATC

ATIS 120.3  
CLNC DEL  
128.6  
DENVER DEP CON  
132.75 269.3

### TAKEOFF MINIMUMS:

Rwys 10, 35L/R: Standard.  
Rwy 17L: Standard with minimum climb of 255' per NM to 8000.  
Rwy 17R: Standard with minimum climb of 370' per NM to 8000.  
Rwy 28: Standard with minimum climb of 300' per NM to 8000.

(NARRATIVE ON FOLLOWING PAGE)

NOTE: RADAR required.  
NOTE: Chart not to scale.

# DENVER TWO DEPARTURE

DENVER, COLORADO  
CENTENNIAL (APA)