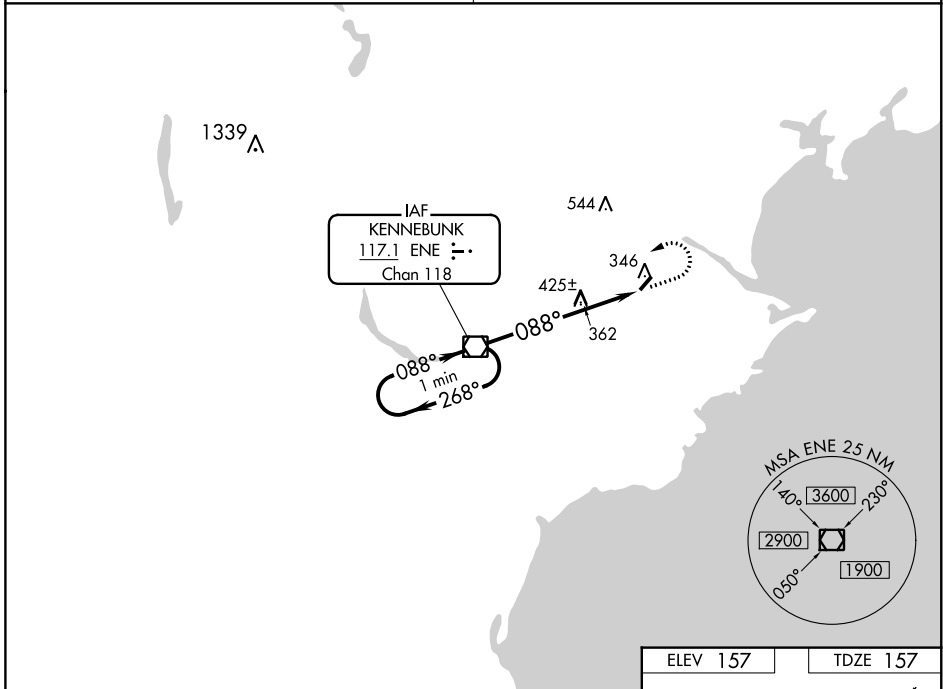


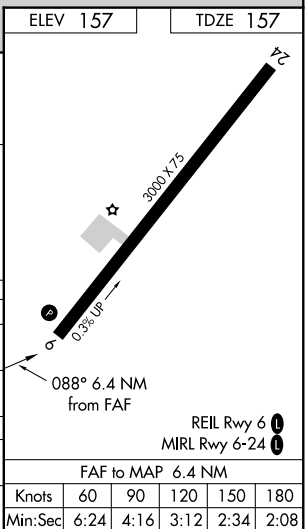
VORTAC ENE 117.1 Chan 118	APP CRS 088°	Rwy Idg TDZE Apt Elev	3000 157 157
---	------------------------	-----------------------------	---

VOR RWY 6
BIDDEFORD MUNI (B19)

<p>NA Obtain local altimeter on CTAF; when not received, use Sanford altimeter setting. VDP NA when using Sanford altimeter setting.</p>	<p>MISSED APPROACH: Climb to 800, then climbing left turn to 2300 direct ENE VOR/DME and hold.</p>
<p>PORTLAND APP CON ★ 119.75 269.35</p>	<p>UNICOM 123.0 (CTAF) 0</p>



One Minute Holding Pattern	ENE VORTAC	800	2300	ENE
2300 ← 268°	088° →	088°	ENE 5	ENE 6.4
VGSi and descent angles not coincident (VGSi Angle 3.50/TCH 31).		3.14° TCH 31	5 NM	1.4 NM
CATEGORY	A	B	C	D
S-6	680-1	523 (600-1)	680-1½ 523 (600-1½)	NA
CIRCLING	700-1	543 (600-1)	700-1½ 543 (600-1½)	NA
SANFORD ALTIMETER SETTING MINIMUMS				
S-6	720-1	563 (600-1)	720-1½ 563 (600-1½)	NA
CIRCLING	740-1	583 (600-1)	740-1½ 583 (600-1½)	NA



NE-1, 04 NOV 2021 to 02 DEC 2021

NE-1, 04 NOV 2021 to 02 DEC 2021