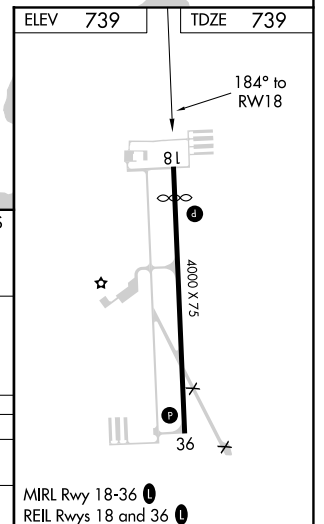
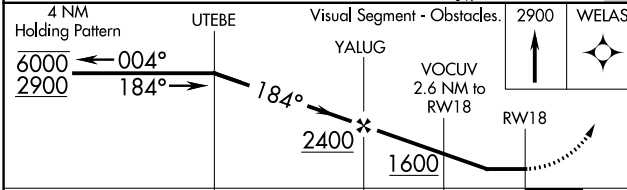
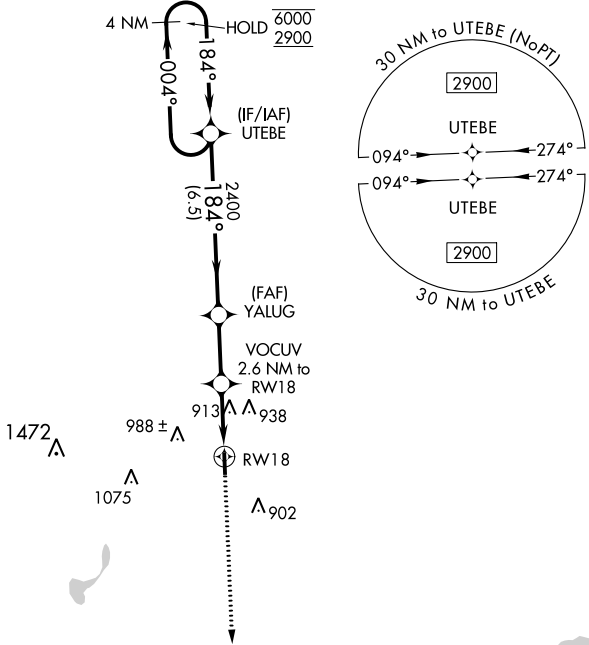


APP CRS <b>184°</b>	Rwy Idg TDZE Apt Elev	<b>3530</b> <b>739</b> <b>739</b>
------------------------	-----------------------------	---

# RNAV (GPS) RWY 18

ROMEO STATE (D98)

RNP APCH.		MISSED APPROACH: Climb to 2900 direct WELAS and hold.
<p><b>▼</b> Rwy 18 helicopter visibility reduction below 1 SM NA. Use Coleman A Young Muni altimeter setting. Straight-in and Circling Rwy 18 NA at night.</p> <p><b>▲</b> NA</p>		
DET ASOS <b>124.875</b>	SELFRIDGE APP CON ★ <b>119.6 391.9</b>	UNICOM <b>122.8 (CTAF) ①</b>



CATEGORY	A	B	C	D
INAV MDA	1240-1	501 (600-1)	1240-1 $\frac{3}{8}$	501 (600-1 $\frac{3}{8}$ )
CIRCLING	1300-1 561 (600-1)	1320-1 581 (600-1)	1320-1 $\frac{1}{2}$ 581 (600-1 $\frac{1}{2}$ )	1420-2 $\frac{1}{4}$ 681 (700-2 $\frac{1}{4}$ )

MIRL Rwy 18-36 ①  
REIL Rwy 18 and 36 ①

EC-1, 04 NOV 2021 to 02 DEC 2021

EC-1, 04 NOV 2021 to 02 DEC 2021