

DONALSONVILLE, GEORGIA

AL-6121 (FAA)

20310

VORTAC MAI <b>114.0</b> Chan <b>87</b>	APP CRS <b>044°</b>	Rwy Idg TDZE Apt Elev	<b>N/A</b> <b>N/A</b> <b>148</b>
--	------------------------	-----------------------------	--

**VOR-A**  
DONALSONVILLE MUNI (17J)

DME required.

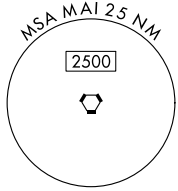
**▼** Circling Rwy 1 NA at night. Rwy 1 helicopter visibility reduction below 1 SM NA. When local altimeter setting not received, use Bainbridge altimeter setting.

**MISSED APPROACH:** Climbing right turn to 1800 on MAI VORTAC R-044 to DEBTS/MAI 14 DME and hold.

AWOS-3PT  
**119.675**

CAIRNS APP CON \*  
**125.4 327.125**

CTAF  
**122.9 0**



841 **▲**

533 **▲**

DONAC  
MAI **18**

DEBTS  
MAI **14**

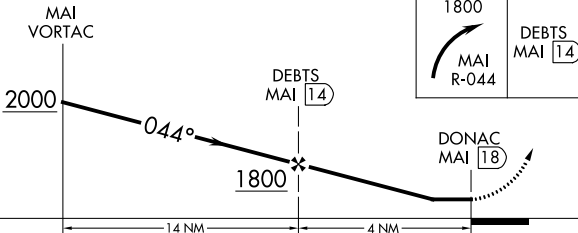
IF/IAF  
MARIANNA  
114.0 MAI  
Chan 87

1800  
044°  
(14)

ELEV 148



044° 4 NM  
from FAF



CATEGORY	A	B	C	D
<b>C</b> CIRCLING	1060-1¼	912 (1000-1¼)	1060-2¾ 912 (1000-2¾)	1060-3 912 (1000-3)

MIRL Rwy 1-19 **0**

DONALSONVILLE, GEORGIA  
Amdt 3B 19JUL18

31°00'N-84°53'W

DONALSONVILLE MUNI (17J)  
**VOR-A**

SE-4, 04 NOV 2021 to 02 DEC 2021

SE-4, 04 NOV 2021 to 02 DEC 2021