

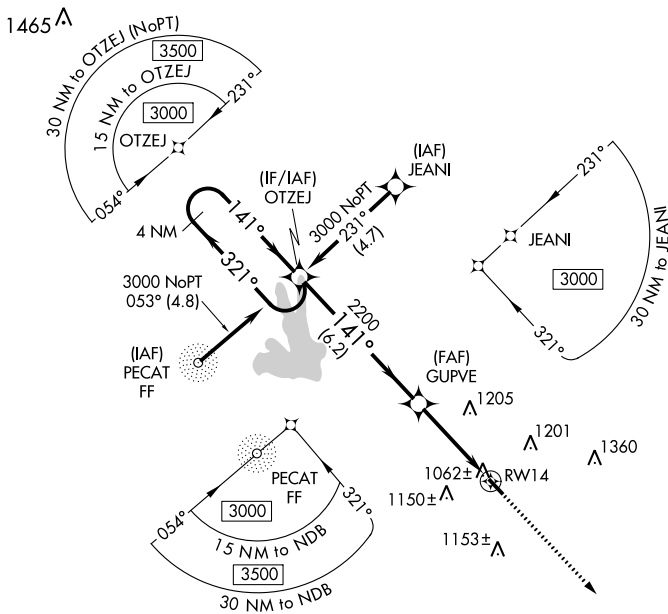
WAAS CH 70429 W14A	APP CRS 141°	Rwy Idg TDZE Apt Elev	3201 958 958
--	------------------------	-----------------------------	---

RNAV (GPS) RWY 14

GRIFFIN-SPALDING COUNTY (6A2)

RNP APCH.	When local altimeter setting not received, use Atlanta Rgnl Falcon Fld altimeter setting and increase all MDA 60 feet. Rwy 14 helicopter visibility reduction below 1 SM NA. Procedure NA at night.	MISSED APPROACH: Climb to 3000 direct LUFEV and hold.
-----------	---	---

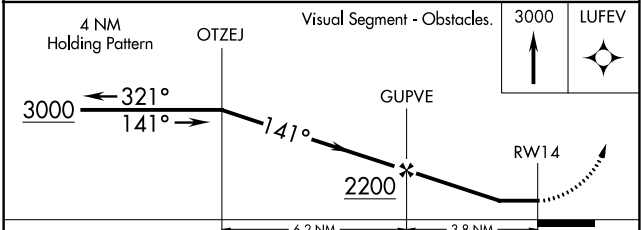
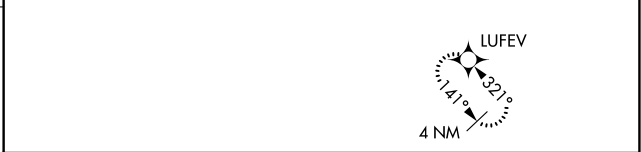
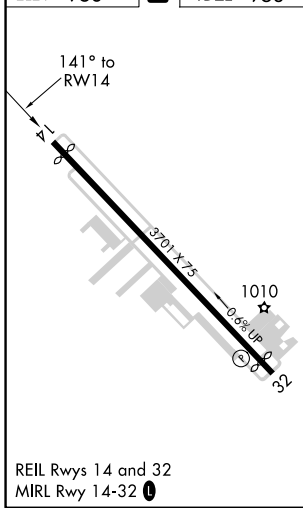
AWOS-3 119.750	ATLANTA APP CON 128.575 343.675	CLNC DEL 128.575 343.675	UNICOM 123.075 (CTAF) 0
--------------------------	---	------------------------------------	-----------------------------------



SE-4, 04 NOV 2021 to 02 DEC 2021

SE-4, 04 NOV 2021 to 02 DEC 2021

ELEV 958	D	TDZE 958
----------	----------	----------



CATEGORY	A	B	C	D
LP MDA	1320-1	362 (400-1)	NA	
LNAV MDA	1400-1	442 (500-1)	NA	