

APP CRS <b>189°</b>	Rwy ldg <b>5499</b>
	TDZE <b>968</b>
	Apt Elev <b>990</b>

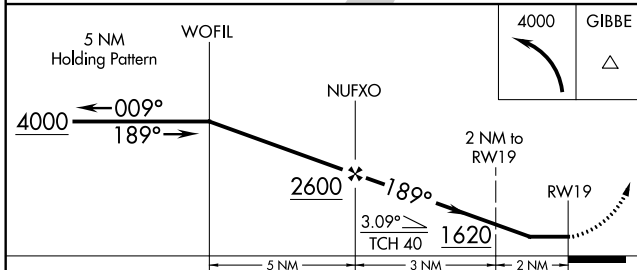
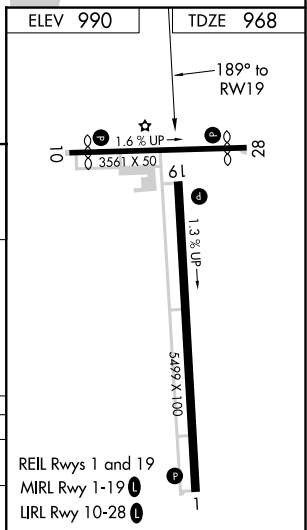
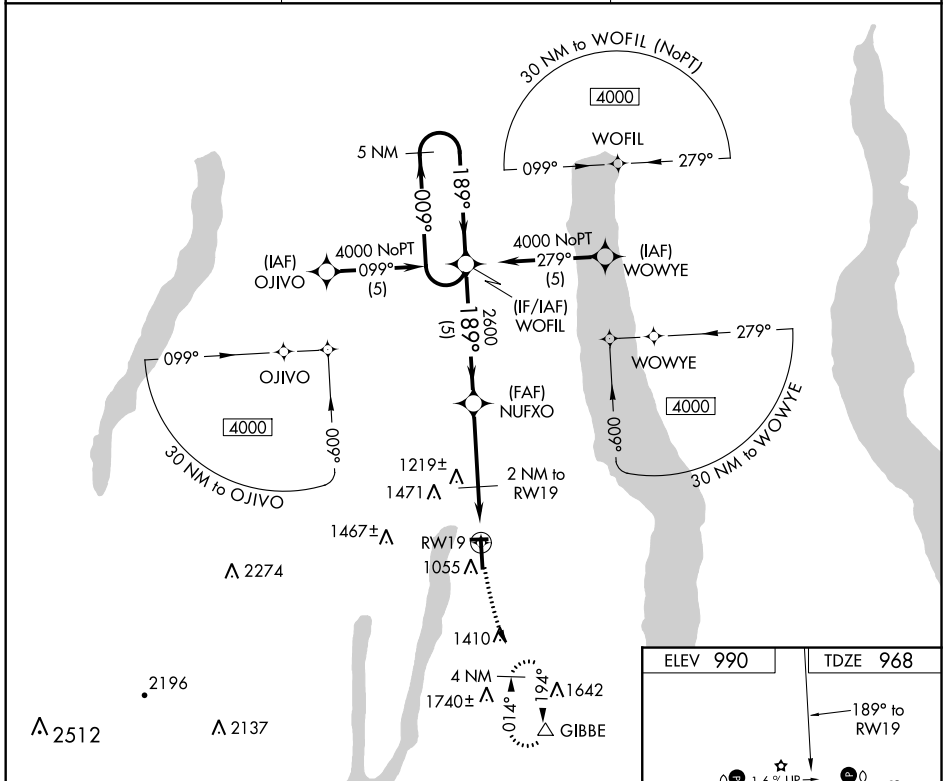
# RNAV (GPS) RWY 19

PENN YAN (P.E.O)

**▼** DME/DME RNP-0.3 NA. When local altimeter setting not received, use Elmira altimeter setting and increase all MDA 80 feet.  
**▲** Increase S-19 Cats C/D, and Circling Cats C/D visibility ¼ mile.

MISSED APPROACH: Climbing left turn to 4000 direct GIBBE and hold, continue climb-in-hold to 4000.

ASOS <b>121.175</b>	ELMIRA APP CON* <b>124.3 257.8</b>	UNICOM <b>123.0 (CTAF) 0</b>
------------------------	---------------------------------------	---------------------------------



CATEGORY	A	B	C	D
LNVA MDA	1400-1	432 (500-1)	1400-1 ¼ 432 (500-1 ¼)	1400-1 ½ 432 (500-1 ½)
CIRCLING	1480-1 490 (500-1)	1600-1 610 (700-1)	1680-2 690 (700-2)	1780-2 ½ 790 (800-2 ½)

NE-2, 04 NOV 2021 to 02 DEC 2021

NE-2, 04 NOV 2021 to 02 DEC 2021