

WAAS CH 77639 W31A	APP CRS 320°	Rwy Idg TDZE Apt Elev	6631 5289 5320
--	------------------------	-----------------------------	---

RNAV (GPS) X RWY 31

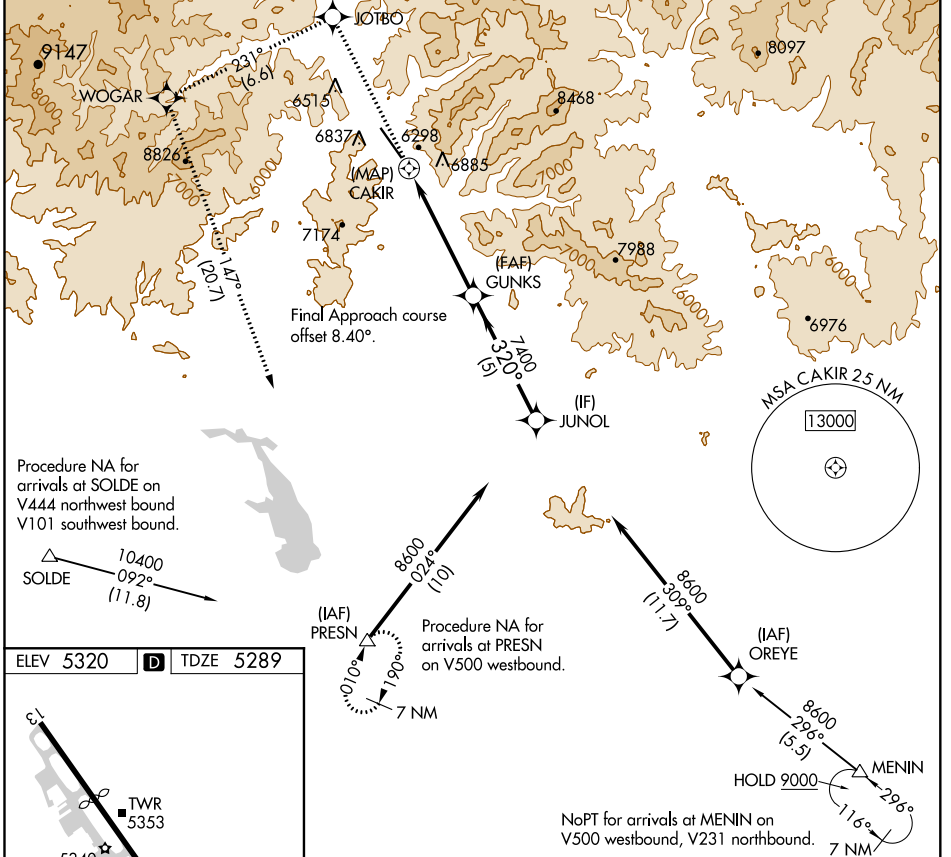
FRIEDMAN MEML (SUN)

MISSED APPROACH: (Do not exceed 185 KIAS until WOGAR) Climb to 10500 direct JOTBO and on track 231° to WOGAR and on track 147° to PRESN and hold. *Missed approach requires minimum climb of 420 feet per NM to 9500; if unable to meet climb gradient, see RNAV (GPS) Y RWY 31.

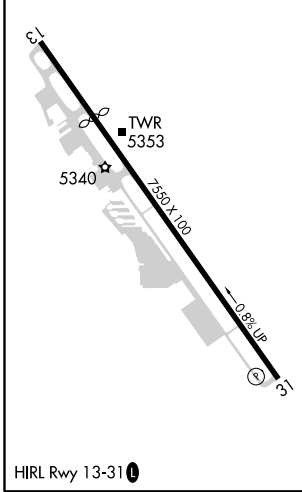
DME/DME RNP-0.3 NA. Rwy 31 helicopter visibility reduction below 1 SM NA.

-14°C

ATIS 128.225	SALT LAKE CENTER 118.05 363.0	HAILEY TOWER * 125.6 (CTAF) 0	GND CON 121.7	UNICOM 122.95
------------------------	---	---	-------------------------	-------------------------



ELEV 5320	D	TDZE 5289
-----------	----------	-----------



10500	JOTBO	tr 231°	WOGAR	tr 147°	PRESN	GUNKS	JUNOL
						7400	8600
CAKIR							
0.5 NM		5.1 NM		5 NM			
CATEGORY	A	B	C	D			
LP MDA*	6180-1¼	891 (900-1¼)	6180-2½	891 (900-2½)			
LNVA MDA*	6920-1¼ 1631 (1600-1¼)	6920-1½ 1631 (1600-1½)	6920-3	1631 (1600-3)			

NW-1, 04 NOV 2021 to 02 DEC 2021

NW-1, 04 NOV 2021 to 02 DEC 2021