

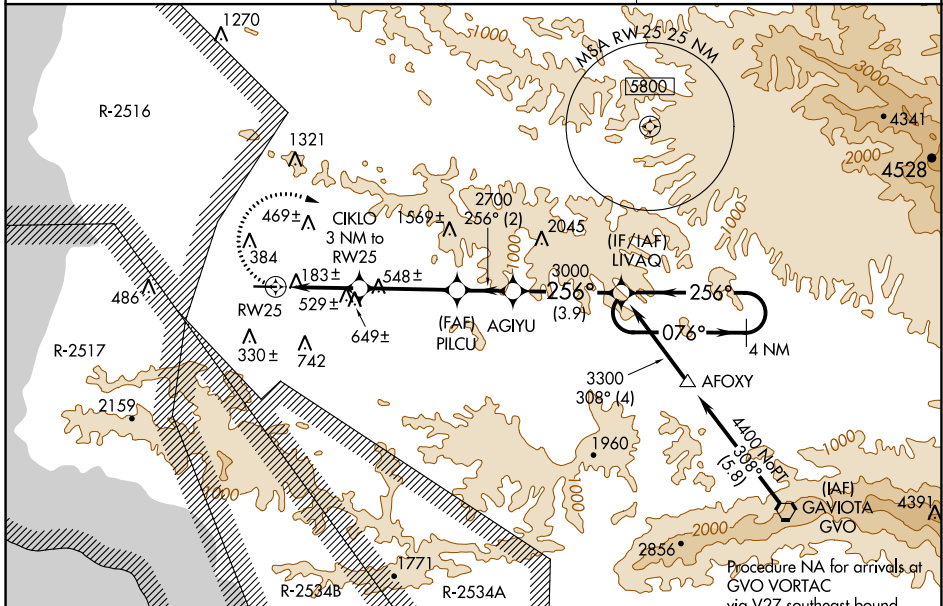
APP CRS	Rwy Idg	4600
256°	TDZE	88
	Apt Elev	88

RNAV (GPS) RWY 25

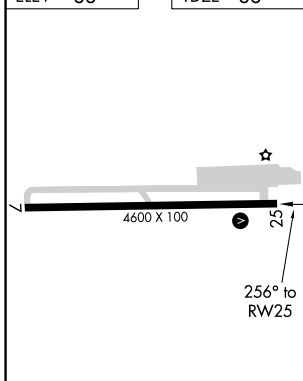
LOMPOC (LPC)

RNP APCH.	MISSED APPROACH: Climbing right turn to 3300 direct LIVAQ and hold.
<p>▼ When local altimeter setting not received, use Santa Maria Pub/Capt G Allan Hancock Fld altimeter setting and increase all MDA 60 feet, and increase LNAV and Circling Cat B visibility 1/4 SM. Procedure NA at night.</p>	

AWOS-3PT 133,875	SANTA BARBARA APP CON★ 124.15 327.8	UNICOM 122.7 (CTAF) 0
----------------------------	---	---------------------------------



ELEV 88	TDZE 88
---------	---------



3300	LIVAQ	VGSI and descent angle not coincident (VGSI Angle 3.25/TCH 26).	4 NM Holding Pattern
		AGIYU	LIVAQ
		PILCU	
		CIKLO 3 NM to RW25	
		RW25	
		3.74° TCH 40	
		1320	
		2700	
		3000	
		076°	
		256°	
		3300	
		3.9 NM	
		2 NM	
		3.5 NM	
		3 NM	

CATEGORY	A	B	C	D
LNAV MDA	1000-1¼	912 (1000-1¼)		NA
CIRCLING	1000-1¼	912 (1000-1¼)		NA

SW-3, 04 NOV 2021 to 02 DEC 2021

SW-3, 04 NOV 2021 to 02 DEC 2021