

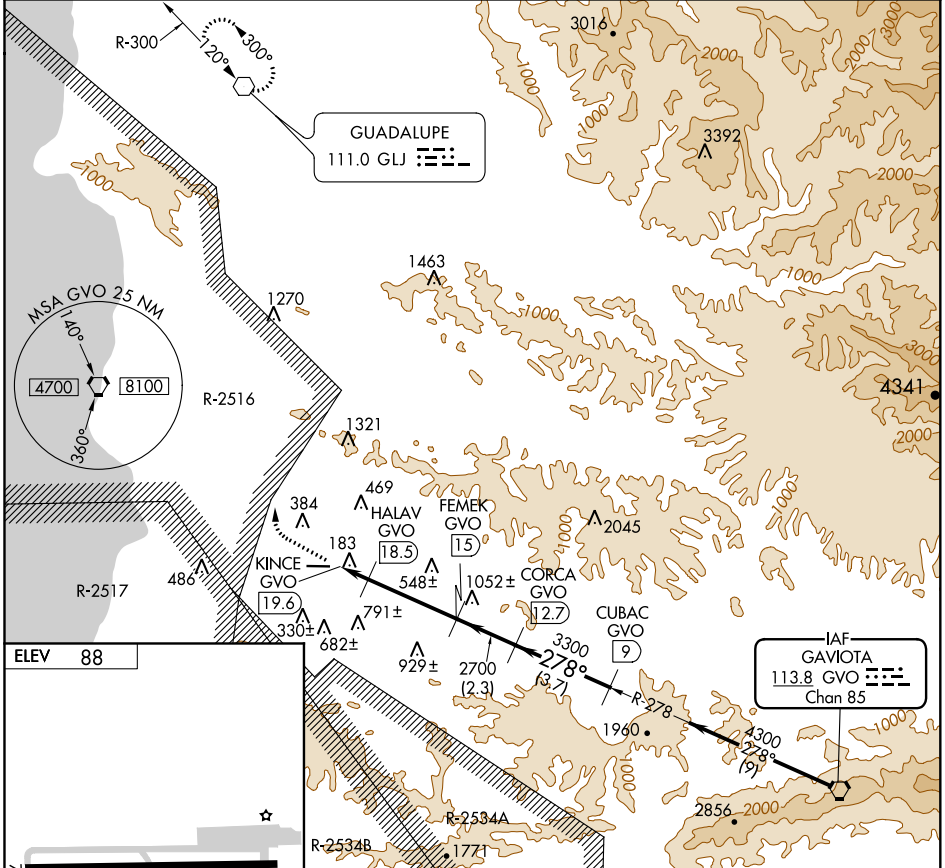
VORTAC GVO <b>113.8</b> Chan 85	APP CRS <b>278°</b>	Rwy Idg TDZE Apt Elev	<b>N/A</b> <b>N/A</b> <b>88</b>
---------------------------------------	------------------------	-----------------------------	---------------------------------------

# VOR/DME-A LOMPOC (LPC)

**Procedure NA at night.**

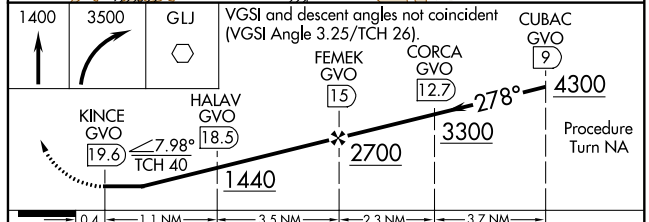
**MISSED APPROACH:** Climb to 1400, then climbing right turn to 3500 direct GLJ VOR and hold.

AWOS-3PT <b>133.875</b>	SANTA BARBARA APP CON* <b>124.15 327.8</b>	UNICOM <b>122.7 (CTAF)</b>
----------------------------	---	-------------------------------



ELEV 88

REIL Rwy 25  
MIRL Rwy 7-25



CATEGORY	A	B	C	D
CIRCLING	1340-1¼ 1252 (1300-1¼)	1340-1½ 1252 (1300-1½)		NA

SW-3, 04 NOV 2021 to 02 DEC 2021

SW-3, 04 NOV 2021 to 02 DEC 2021