

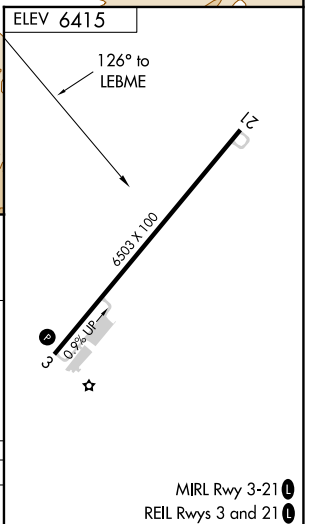
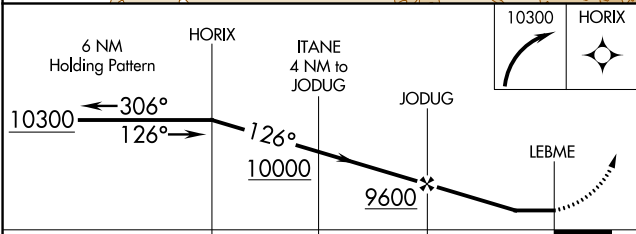
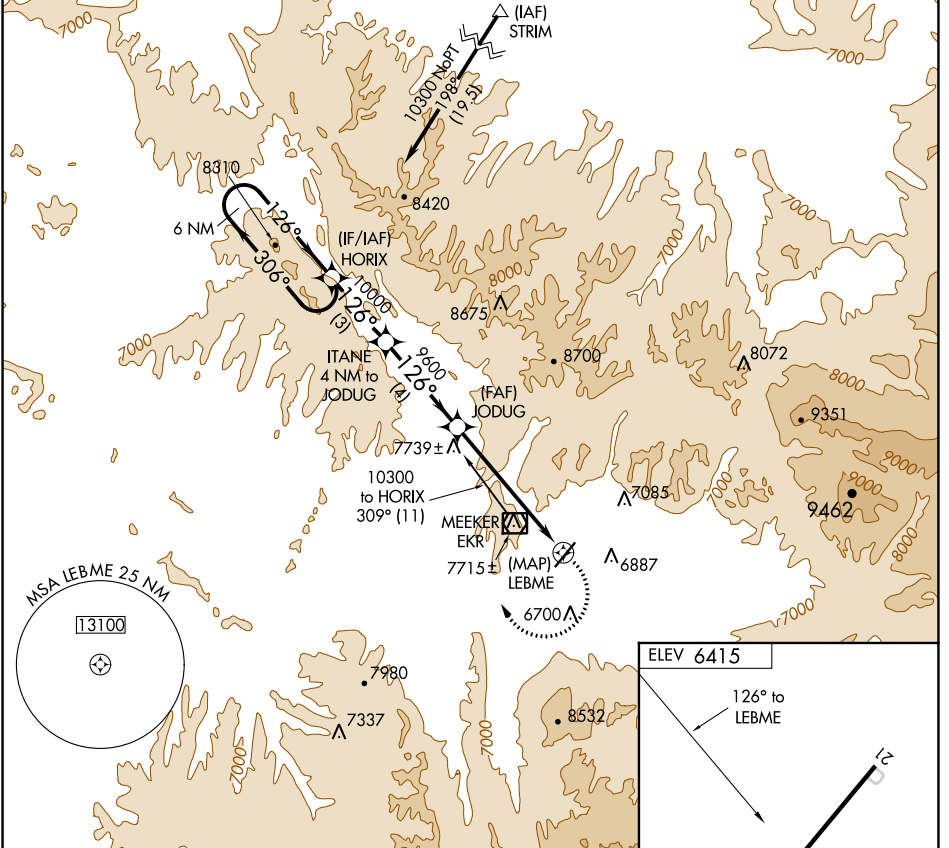
APP CRS	Rwy Idg	N/A
126°	TDZE	N/A
	Apt Elev	6415

# RNAV (GPS)-B

MEEKER COULTER FLD (EEO)

**⚠** DME/DME RNP-0.3 NA. Circling not authorized west of Rwy 3-21. Night Landing: Rwy 21 NA.  
**⚠** -25°C Helicopter visibility reduction below 1 SM NA.  
**⚠** MISSED APPROACH: Climbing right turn to 10300 direct HORIX WP and hold.

ASOS <b>135.525</b>	DENVER CENTER <b>134.5 327.8</b>	UNICOM <b>122.8 (CTAF)</b> <b>📻</b>
------------------------	-------------------------------------	----------------------------------------



CATEGORY	A	B	C	D
CIRCLING	7960-1¼ 1545 (1600-1¼)	7960-1½ 1545 (1600-1½)	8440-3 2025 (2100-3)	NA

MEEKER, COLORADO  
 Orig-C 15JUL21

40°03'N-107°53'W

MEEKER COULTER FLD (EEO)  
**RNAV (GPS)-B**

SW-1, 04 NOV 2021 to 02 DEC 2021

SW-1, 04 NOV 2021 to 02 DEC 2021

MIRL Rwy 3-21 **📻**  
 REIL Rws 3 and 21 **📻**