

APP CRS 151°	Rwy Idg 5100
	TDZE 968
	Apt Elev 968

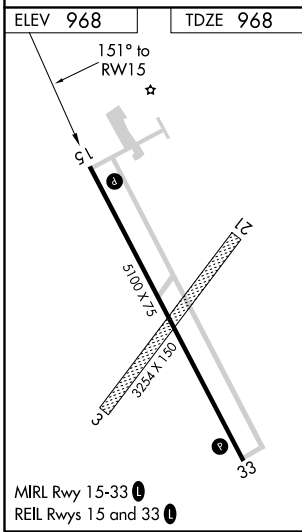
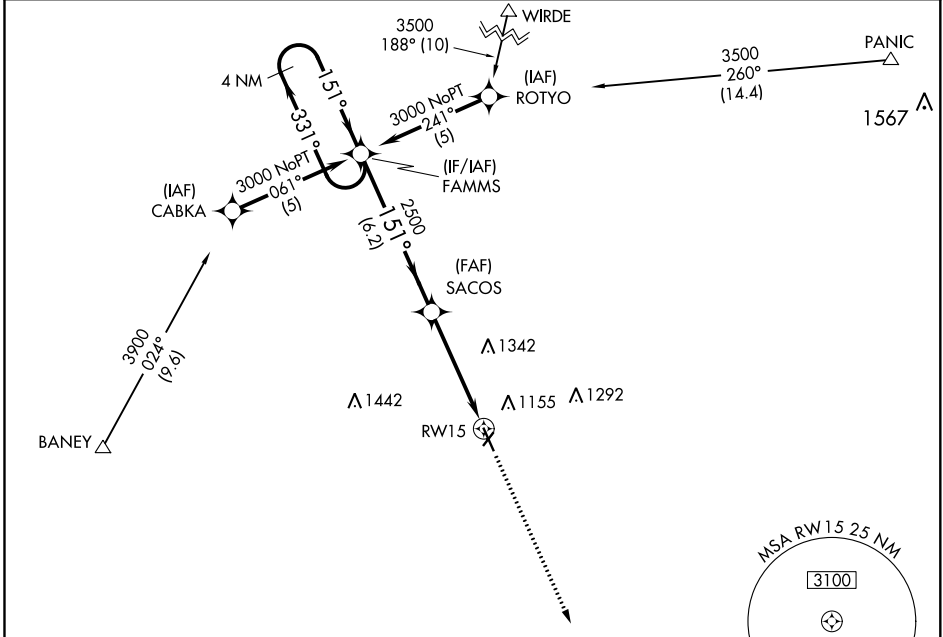
RNAV (GPS) RWY 15

HARRY STERN (BWP)

NA DME/DME RNP-0.3 NA. Circling to Rwy 3/21 NA at night.
 If local altimeter setting not received, use Fergus Falls, MN altimeter setting and increase all MDAs 80 feet.
 VDP NA when using Fergus Falls, MN altimeter setting.

MISSED APPROACH: Climb to 3000 direct BEGGS and hold.

AWOS-3 127.875	MINNEAPOLIS CENTER 127.35 278.3	UNICOM 123.0 (CTAF) 0
--------------------------	---	---------------------------------



4 NM Holding Pattern 3000 ← 331° → 151° → 151° → 2500 VGSI and descent angles not coincident (VGSI Angle 3.00/TCH 42). 3.04° TCH 55 6.2 NM 3 NM 1.6 NM	3000 ↑ BEGGS															
	BEGGS ⬠															
4 NM Holding Pattern 3000 ← 331° → 151° → 151° → 2500 VGSI and descent angles not coincident (VGSI Angle 3.00/TCH 42). 3.04° TCH 55 6.2 NM 3 NM 1.6 NM	SACOS 1.6 NM to RWY 15															
<table border="1"> <thead> <tr> <th>CATEGORY</th> <th>A</th> <th>B</th> <th>C</th> <th>D</th> </tr> </thead> <tbody> <tr> <td>LNAV MDA</td> <td>1500-1</td> <td>532 (600-1)</td> <td>1500-1½ 532 (600-1½)</td> <td>1500-1¾ 532 (600-1¾)</td> </tr> <tr> <td>CIRCLING</td> <td>1520-1</td> <td>552 (600-1)</td> <td>1520-1½ 552 (600-1½)</td> <td>1560-2 592 (600-2)</td> </tr> </tbody> </table>	CATEGORY	A	B	C	D	LNAV MDA	1500-1	532 (600-1)	1500-1½ 532 (600-1½)	1500-1¾ 532 (600-1¾)	CIRCLING	1520-1	552 (600-1)	1520-1½ 552 (600-1½)	1560-2 592 (600-2)	
CATEGORY	A	B	C	D												
LNAV MDA	1500-1	532 (600-1)	1500-1½ 532 (600-1½)	1500-1¾ 532 (600-1¾)												
CIRCLING	1520-1	552 (600-1)	1520-1½ 552 (600-1½)	1560-2 592 (600-2)												

NC-1, 04 NOV 2021 to 02 DEC 2021

NC-1, 04 NOV 2021 to 02 DEC 2021