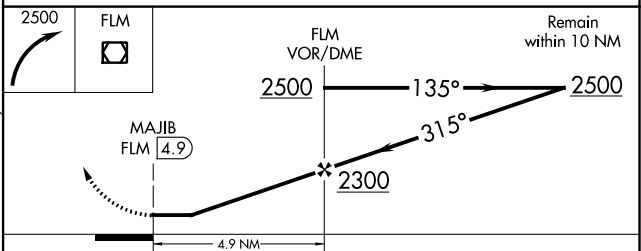
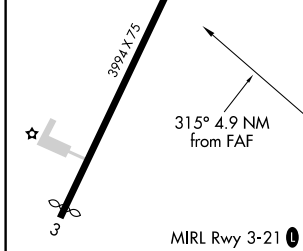
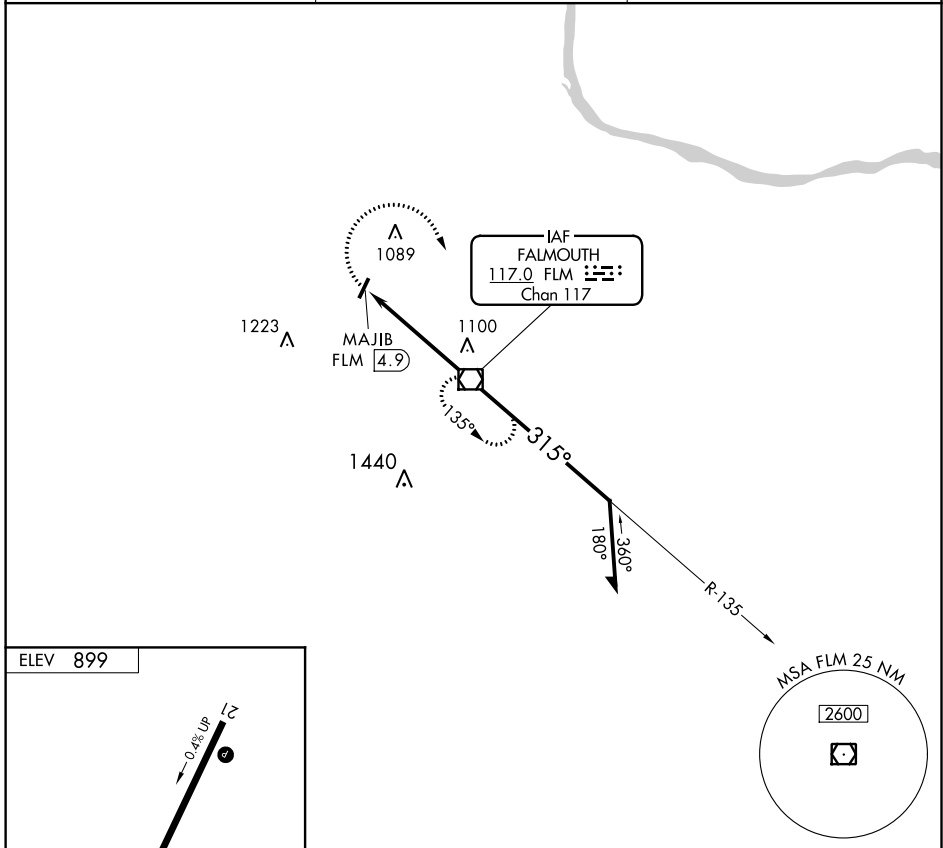


VOR/DME FLM <b>117.0</b> Chan <b>117</b>	APP CRS <b>315°</b>	Rwy Idg TDZE Apt Elev <b>N/A</b> <b>N/A</b> <b>899</b>
--	------------------------	---

**VOR-A**  
GENE SNYDER (K62)

<p><b>▼</b> Night landing: Rwy 03 NA. When local altimeter setting not received, use Cincinnati/Northern Kentucky Intl altimeter setting and increase all MDA 60 feet. Helicopter visibility reduction below 1 SM NA.</p>	<p><b>MISSED APPROACH:</b> Climbing right turn to 2500 direct FLM VOR/DME and hold.</p>
---	---

AWOS-3 <b>123.825</b>	CINCINNATI APP CON <b>121.0 254.25</b>	UNICOM <b>122.7 (CTAF) 0</b>
--------------------------	---	---------------------------------



FAF to MAP 4.9 NM					CATEGORY	A	B	C	D
Knots	60	90	120	150	180	1400-1	501 (600-1)	NA	
Min:Sec	4:54	3:16	2:27	1:58	1:38	<b>CIRCLING</b>			

SE-1, 04 NOV 2021 to 02 DEC 2021

SE-1, 04 NOV 2021 to 02 DEC 2021