

APP CRS	Rwy Idg	<b>2160</b>
<b>181°</b>	TDZE	<b>708</b>
	Apt Elev	<b>708</b>

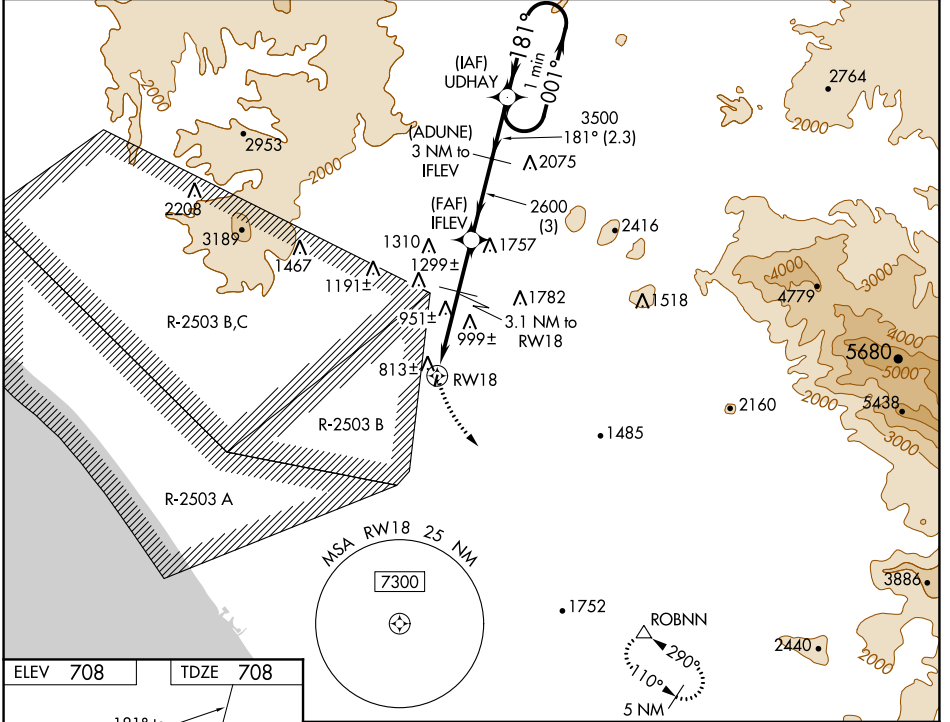
# GPS RWY 18

FALLBROOK COMMUNITY AIRPARK (L18)

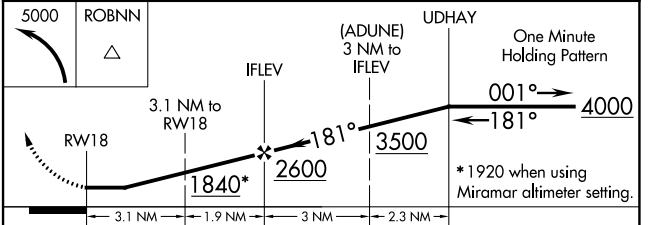
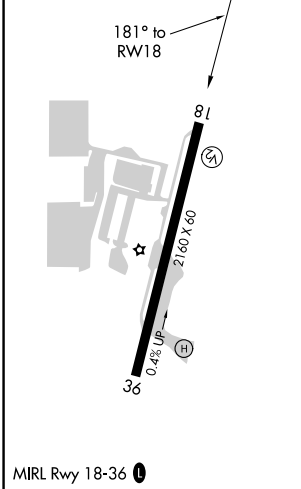
**NA** Circling NA west of Rwy 18-36. Obtain local altimeter setting on CTAF; when not received, use MCAS Miramar altimeter setting minimums.

MISSED APPROACH: Climbing left turn to 5000 direct ROBNN WP and hold.

AWOS-3P <b>118.425</b>	SOCAL APP CON <b>127.3 323.0</b>	CTAF <b>123.05 0</b>
---------------------------	-------------------------------------	-------------------------



ELEV	<b>708</b>	TDZE	<b>708</b>
------	------------	------	------------



CATEGORY	A	B	C	D
S-18	1260-1	552 (600-1)		NA
CIRCLING	1260-1	552 (600-1)		NA
MCAS MIRAMAR ALTIMETER SETTING MINIMUMS				
S-18	1360-1	652 (700-1)		NA
CIRCLING	1360-1	652 (700-1)		NA

SW-3, 04 NOV 2021 to 02 DEC 2021

SW-3, 04 NOV 2021 to 02 DEC 2021