

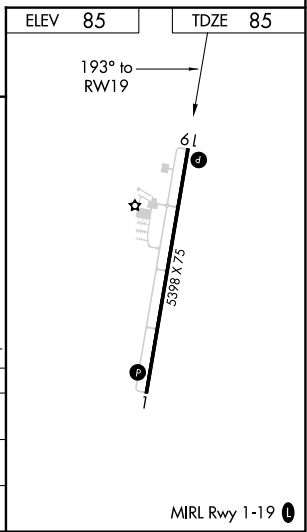
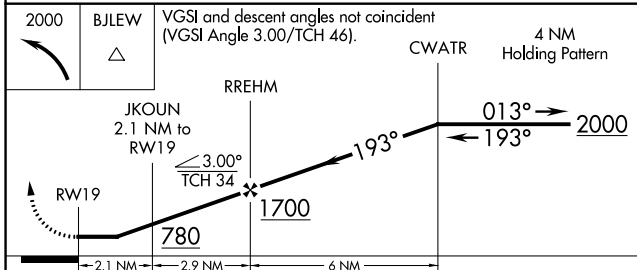
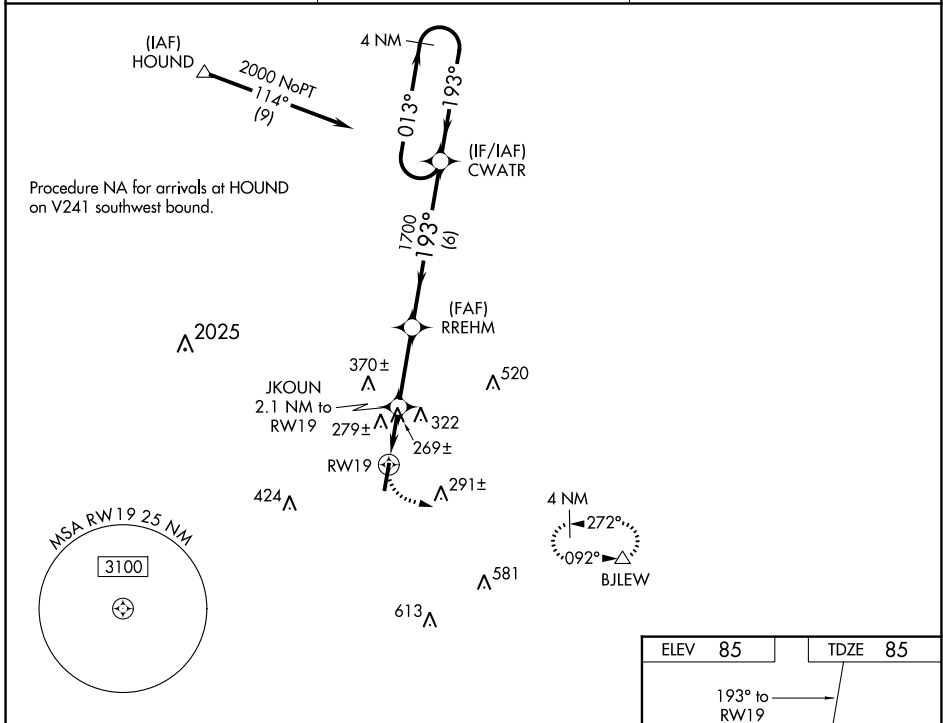
WAAS CH 61026 W19A	APP CRS 193°	Rwy Idg TDZE Apt Elev	5398 85 85
--	------------------------	-----------------------------	---------------------------------------

RNAV (GPS) RWY 19

TRI-COUNTY (1J~~0~~)

RNP APCH	<p>Procedure NA at night. Circling NA to Rwy 1. Rwy 19 helicopter visibility reduction below 1 SM NA. When local altimeter setting not received, use Marianna altimeter setting and increase all MDA 60 feet, and increase LP, LNAV and Circling Cat C visibility 1/2 SM.</p>	MISSED APPROACH: Climbing left turn to 2000 direct BJLEW and hold.
----------	---	--

AWOS-3PT 119.825	CAIRNS APP CON ★ 133.75 270.35	UNICOM 122.725 (CTAF) 0
----------------------------	--	--



CATEGORY	A	B	C	D
LP MDA	580-1	495 (500-1)	580-1 ³ / ₈ 495 (500-1 ³ / ₈)	NA
LNAV MDA	600-1	515 (600-1)	600-1 ³ / ₈ 515 (600-1 ³ / ₈)	NA
CIRCLING	640-1 555 (600-1)	660-1 575 (600-1)	660-1 ¹ / ₂ 575 (600-1 ¹ / ₂)	NA

SE-3, 04 NOV 2021 to 02 DEC 2021

SE-3, 04 NOV 2021 to 02 DEC 2021