

KINGDOM NINE DEPARTURE

ATIS 126.925
 CLINC DEL 128.725
 GND CON 132.65 306.2
 ALLIANCE TOWER 135.15 257.9
 REGIONAL DEP CON 118.1 306.95

TAKEOFF MINIMUMS

Rwys 34L/R: Standard.
 Rwy 16L: 300-2/4, or standard with minimum climb of 208' per NM to 1100, or alternatively, with standard takeoff minimums and a normal 200' per NM climb gradient, takeoff must occur no later than 1400' prior to DER.
 Rwy 16R: 300-2/4, or standard with minimum climb of 210' per NM to 1100, or alternatively, with standard takeoff minimums and a normal 200' per NM climb gradient, takeoff must occur no later than 1500' prior to DER.

WICHITA FALLS
 112.7 SPS
 Chan 74
 N33°59.24'-W98°35.61'
 L-17, H-6

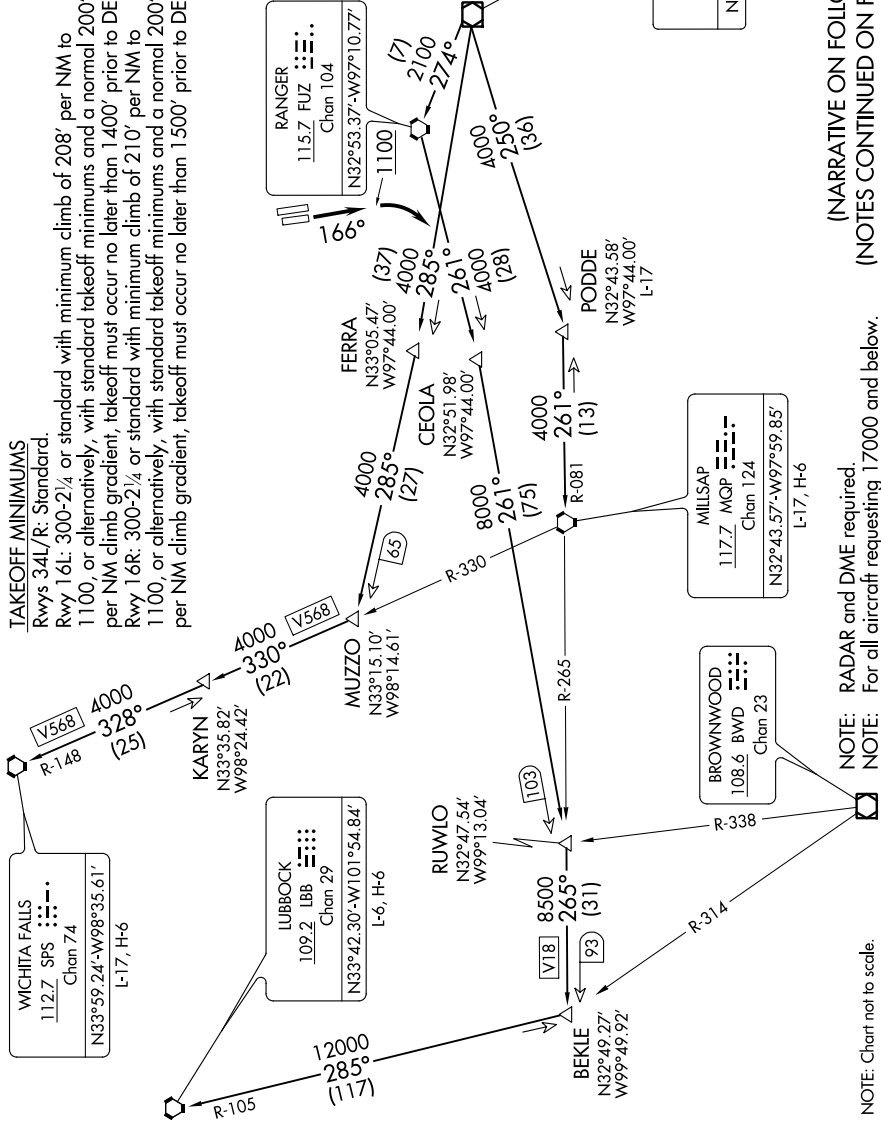
LUBBOCK
 109.2 LBB
 Chan 29
 N33°42.30'-W101°54.84'
 L-6, H-6

RANGER
 115.7 FUZ
 Chan 104
 N32°53.37'-W97°10.77'

MAVERICK
 113.1 TTT
 Chan 78
 N32°52.15'-W97°02.43'

MILLSAP
 117.7 MQP
 Chan 124
 N32°43.57'-W97°59.85'
 L-17, H-6

BROWNWOOD
 108.6 BWD
 Chan 23



(NARRATIVE ON FOLLOWING PAGE)
 (NOTES CONTINUED ON FOLLOWING PAGE)

NOTE: RADAR and DME required.
 NOTE: For all aircraft requesting 17000 and below.

NOTE: Chart not to scale.

SC-2, 04 NOV 2021 to 02 DEC 2021

SC-2, 04 NOV 2021 to 02 DEC 2021

KINGDOM NINE DEPARTURE