

WAAS CH <b>82541</b> <b>W16B</b>	APP CRS <b>166°</b>	Rwy Idg <b>10600</b> TDZE <b>723</b> Apt Elev <b>723</b>
--	------------------------	--

# RNAV (GPS) RWY 16L

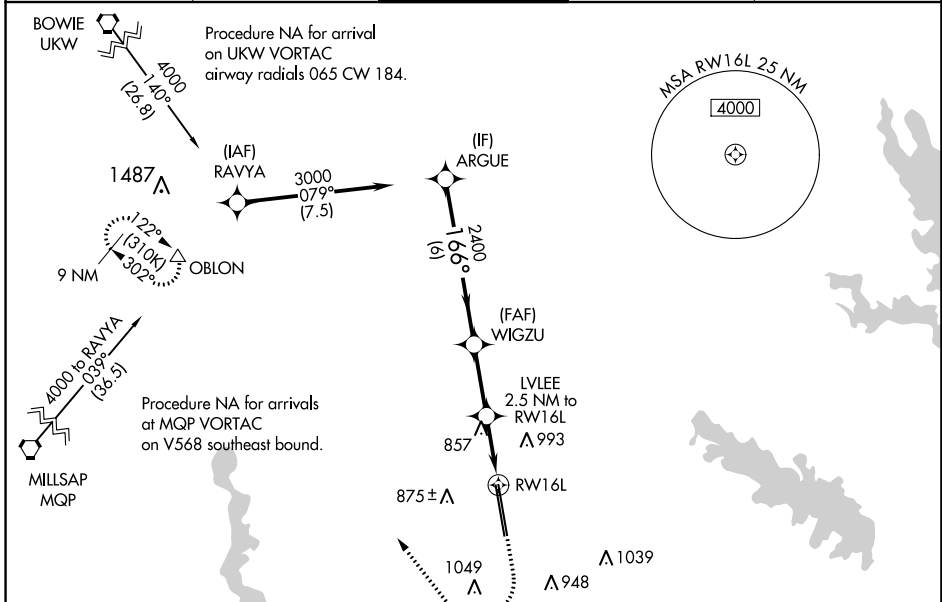
FORT WORTH ALLIANCE (AFW)

**⚠** For uncompensated Baro-VNAV systems, LNAV/VNAV NA below -8°C (18°F) or above 54°C (130°F). Circling NA east of Rwy 16L-34R. DME/DME RNP-0.3 NA. For inop ALS, increase LPV Cat E visibility to RVR 4000, LNAV/VNAV all Cats visibility to RVR 4500 and LNAV Cat E visibility to RVR 6000.

ALS-F-2

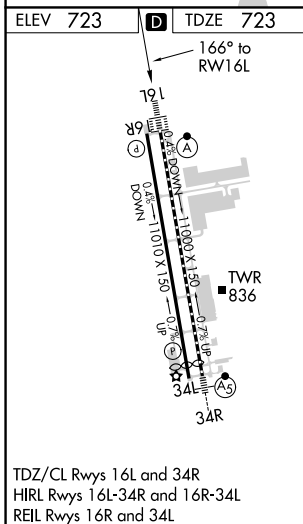
MISSED APPROACH: Climb to 1200 then climbing right turn to 3000 direct OBLON and hold.

ATIS <b>126.925</b>	REGIONAL APP CON <b>118.1 306.95</b>	ALLIANCE TOWER <b>135.15 257.9</b>	GND CON <b>132.65 306.2</b>	CLNC DEL <b>128.725</b>
------------------------	---	---------------------------------------	--------------------------------	----------------------------



SC-2, 04 NOV 2021 to 02 DEC 2021

SC-2, 04 NOV 2021 to 02 DEC 2021



	ARGUE	WIGZU	LVLEE	OBLON	
	3000	2400	2.5 NM to RWY 16L	3000	
		2400	*1.1 NM to RWY 16L	△	
		*1560			
		6 NM	2.6 NM	1.4 NM	
			1.1 NM		
GP 3.00° TCH 55					
CATEGORY	A	B	C	D	E
LPV DA		923/18	200 (200-½)		
LNAV/VNAV DA		1016/24	293 (300-½)		
LNAV MDA	1120/24	397 (400-½)	1120/35	397 (400-¾)	
<b>C</b> CIRCLING	1160-1 437 (500-1)	1320-1 597 (600-1)	1360-1¾ 637 (700-1¾)	1380-2 657 (700-2)	1380-2¼ 657 (700-2¼)