

TEXOMA ONE DEPARTURE

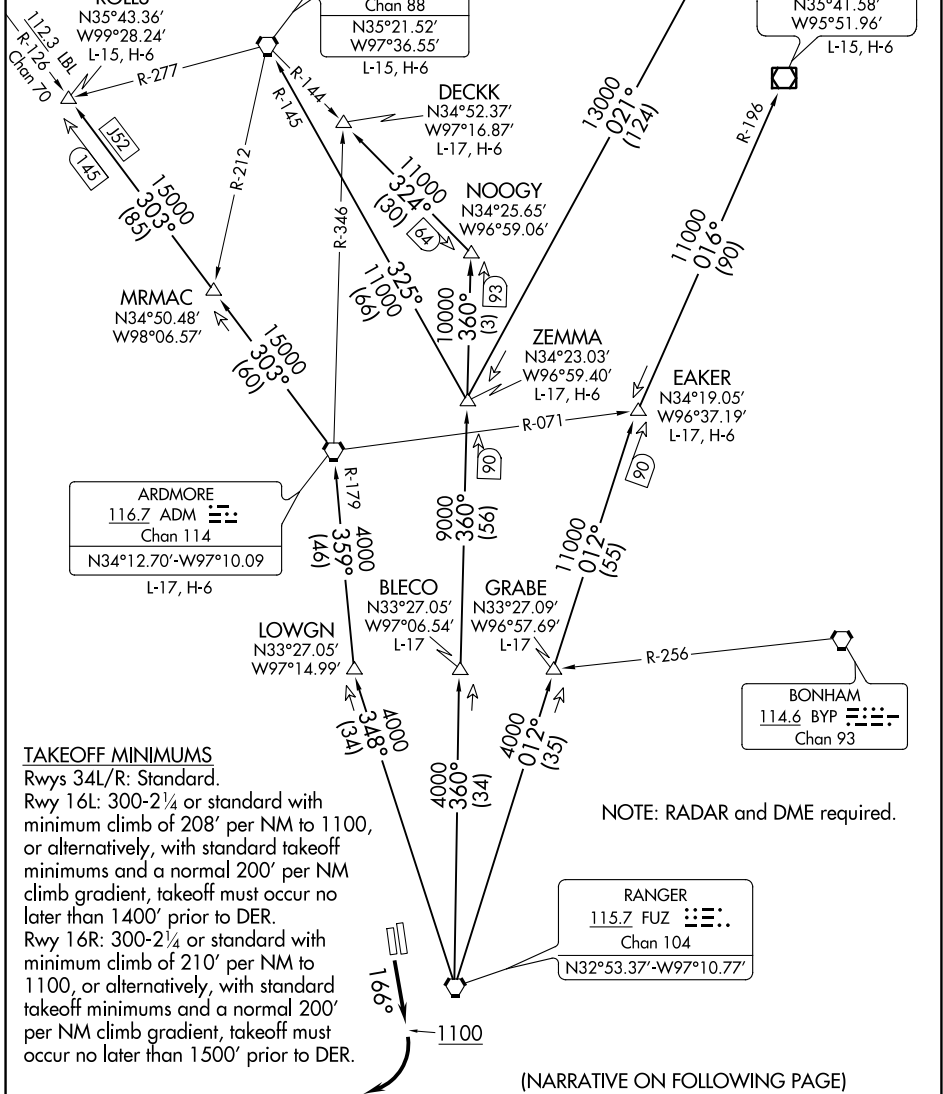
ATIS
126.925
CLNC DEL
128.725
GND CON
132.65 306.2
ALLIANCE TOWER
135.15 257.9
REGIONAL DEP CON
118.1 306.95

ROLLS
N35°43.36'
W99°28.24'
L-15, H-6

WILL ROGERS
114.1 IRW
Chan 88
N35°21.52'
W97°36.55'
L-15, H-6

TULSA
114.4 TUL
Chan 91
N36°11.78'
W95°47.29'
L-15, H-6

OKMULGEE
114.9 OKM
Chan 96
N35°41.58'
W95°51.96'
L-15, H-6



ARDMORE
116.7 ADM
Chan 114
N34°12.70'-W97°10.09'
L-17, H-6

MRMAC
N34°50.48'
W98°06.57'

TAKEOFF MINIMUMS
Rwys 34L/R: Standard.
Rwy 16L: 300-2¼ or standard with minimum climb of 208' per NM to 1100, or alternatively, with standard takeoff minimums and a normal 200' per NM climb gradient, takeoff must occur no later than 1400' prior to DER.
Rwy 16R: 300-2¼ or standard with minimum climb of 210' per NM to 1100, or alternatively, with standard takeoff minimums and a normal 200' per NM climb gradient, takeoff must occur no later than 1500' prior to DER.

NOTE: RADAR and DME required.

(NARRATIVE ON FOLLOWING PAGE)
(NOTES CONTINUED ON FOLLOWING PAGE)

NOTE: Chart not to scale.

SC-2, 04 NOV 2021 to 02 DEC 2021

SC-2, 04 NOV 2021 to 02 DEC 2021

TEXOMA ONE DEPARTURE