

VOR/DME ETL <b>110.2</b> Chan <b>39</b>	APP CRS <b>095°</b>	Rwy Idg TDZE Apt Elev <b>N/A</b> <b>N/A</b> <b>9070</b>
---	------------------------	---

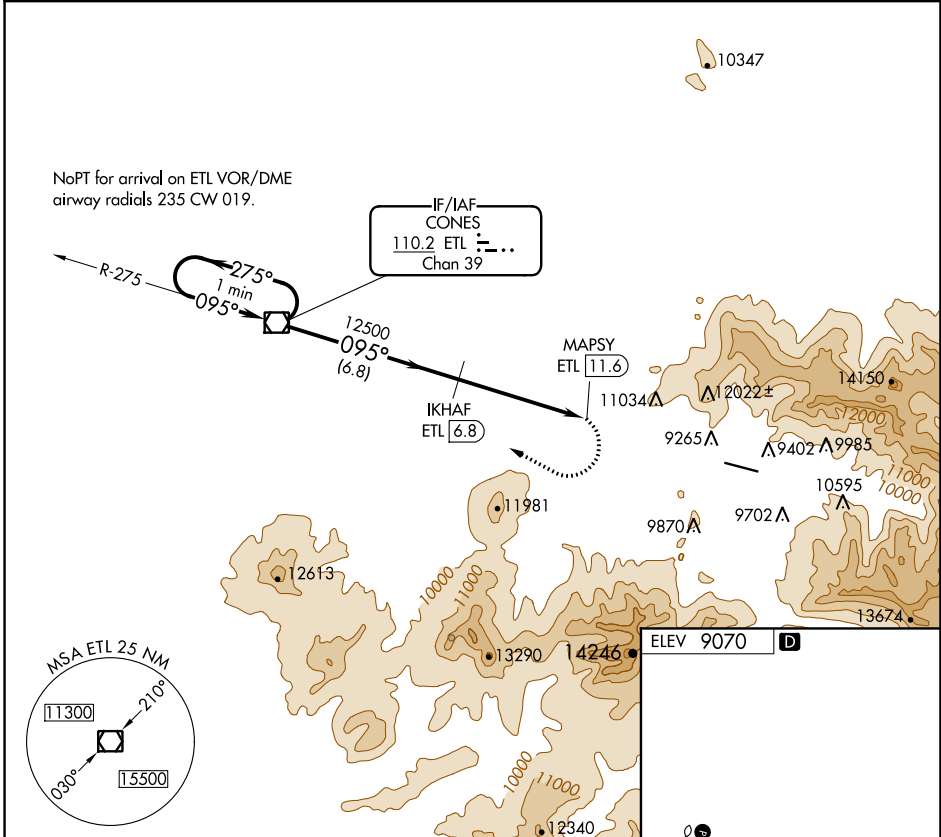
# VOR/DME-A

TELLURIDE RGNL (TEX)

**⚠** Circling NA north of Rwy 9-27.  
**❄** -18°C Procedure NA at night.

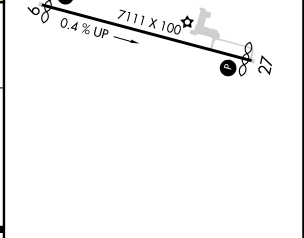
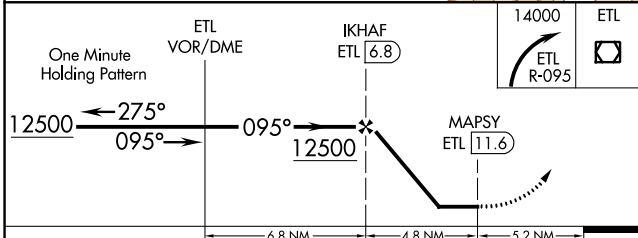
MISSED APPROACH: Immediate climbing right turn to 14000 via ETL VOR/DME R-095 to ETL VOR/DME and hold.

AWOS-3 <b>118.325</b>	DENVER CENTER <b>125.35 354.05</b>	UNICOM <b>123.0 (CTAF)</b>
--------------------------	---------------------------------------	-------------------------------



SW-1, 04 NOV 2021 to 02 DEC 2021

SW-1, 04 NOV 2021 to 02 DEC 2021



CATEGORY	A	B	C	D
<b>C</b> CIRCLING	12420-6	3350 (3400-6)	NA	

HIRL Rwy 9-27  
REIL Rwys 9 and 27