

AIRPORT DIAGRAM

AL-6967 (FAA)

LAUGHLIN/BULLHEAD INTL (IFP)
BULLHEAD CITY, ARIZONA

ATIS
 119.825
 BULLHEAD TOWER ★
 123.9
 GND CON
 118.25
 CLNC DEL
 118.25 (When Tower Closed)
D

RWY 16-34
 PCN 52 F/A/X/T
 S-75, D-200, 2D-400

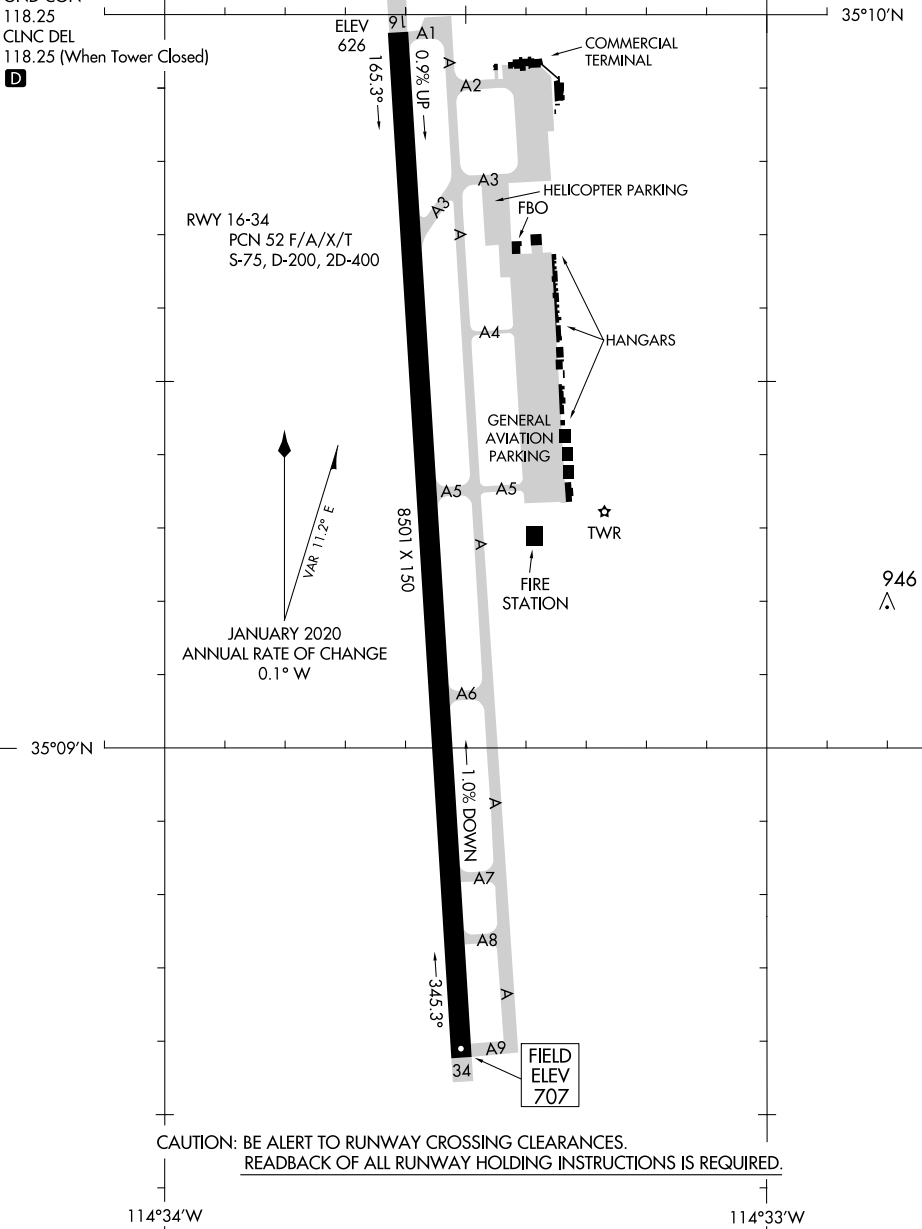
ELEV 626
 1.65.3%
 0.9% UP

8501 X 150

JANUARY 2020
 ANNUAL RATE OF CHANGE
 0.1° W
 VAR 11.2° E

1.0% DOWN
 345.3%

FIELD
 ELEV
 707



CAUTION: BE ALERT TO RUNWAY CROSSING CLEARANCES.
 READBACK OF ALL RUNWAY HOLDING INSTRUCTIONS IS REQUIRED.

114°34'W

114°33'W

SW-4, 04 NOV 2021 to 02 DEC 2021

SW-4, 04 NOV 2021 to 02 DEC 2021

AIRPORT DIAGRAM

BULLHEAD CITY, ARIZONA
LAUGHLIN/BULLHEAD INTL (IFP)