

APP CRS	Rwy Idg	<b>2420</b>
<b>190°</b>	TDZE	<b>168</b>
	Apt Elev	<b>168</b>

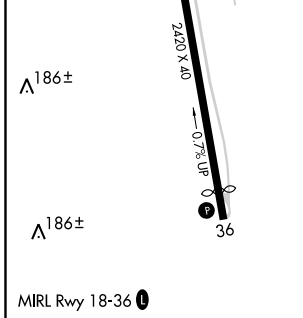
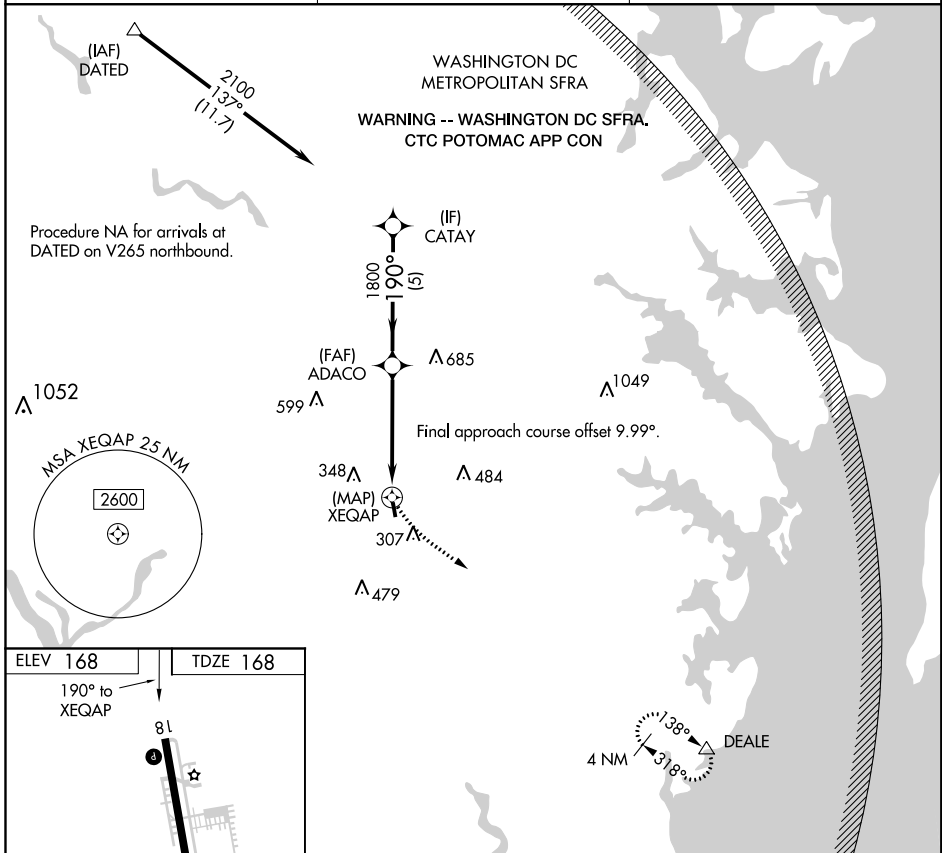
# RNAV (GPS) RWY 18

FREEWAY (W00)

**⚠** Rwy 18 helicopter visibility reduction below 1 SM NA. DME/DME RNP-0.3 NA.  
**⚠** NA Procedure NA at night. Use Fort Meade (Odenton) altimeter setting; when not received, use College Park altimeter setting and increase all MDA 20 feet.

MISSED APPROACH: Climbing left turn to 2000 direct DEALE and hold.

FME AWOS-3 <b>123.925</b>	POTOMAC APP CON <b>128.0 335.5</b>	UNICOM <b>123.075 (CTAF) 0</b>
------------------------------	---------------------------------------	-----------------------------------



2000	DEALE	Visual Segment - Obstacles.	CATAY	
	△			
		ADACO	2100	
		XEQAP	1800	
			190°	
	0.3	4.7 NM	5 NM	
CATEGORY	A	B	C	D
LNAV MDA	760-1	592 (600-1)		NA
<b>C</b> CIRCLING	760-1	592 (600-1)		NA

NE-3, 04 NOV 2021 to 02 DEC 2021

NE-3, 04 NOV 2021 to 02 DEC 2021