

APP CRS	Rwy Idg	4000
341°	TDZE	377
	Apt Elev	378

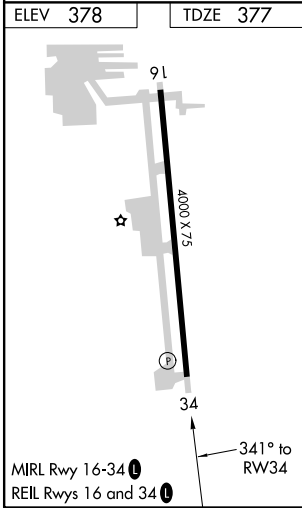
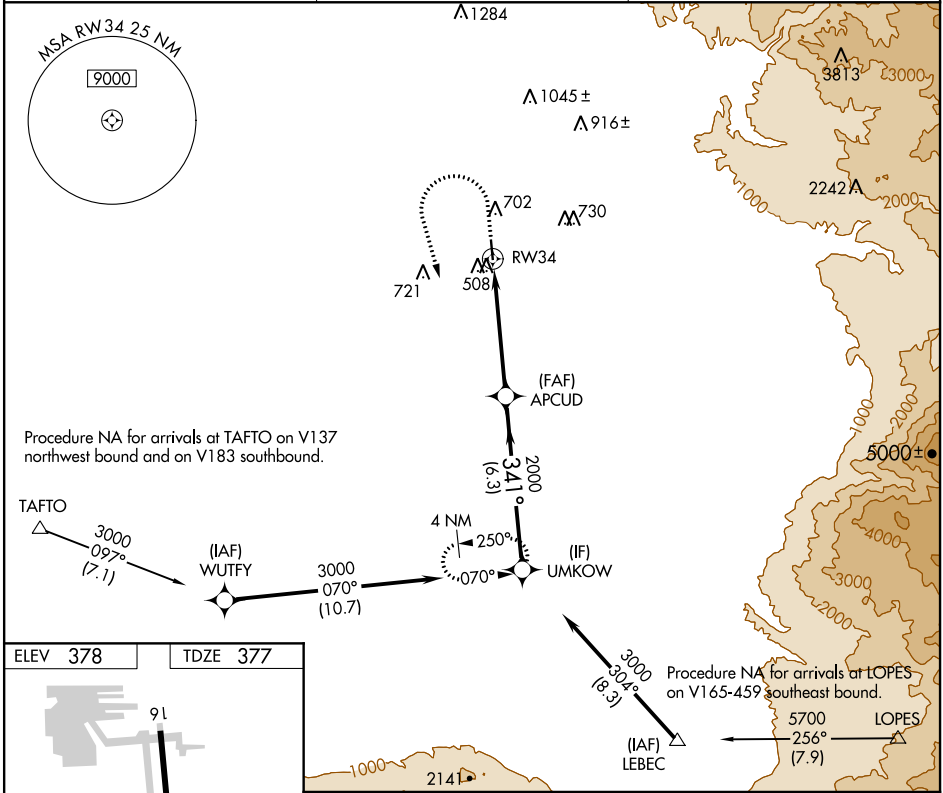
RNAV (GPS) RWY 34

BAKERSFIELD MUNI (L45)

V DME/DME RNP-0.3 NA. Use Meadows Fld altimeter setting. When Meadows Fld altimeter setting not received, use Porterville altimeter setting and increase all MDA 80 feet, increase LNAV and Circling Cat C and D visibility 1/4 mile. Helicopter visibility reduction below 3/4 SM NA. Night Landing Rwy 16 NA.

MISSED APPROACH: Climb to 1200 then climbing left turn to 3000 direct UMKOW and hold.

BFL ASOS 118.6	BAKERSFIELD APP CON * 126.45 270.3	UNICOM 122.8 (CTAF) 0
--------------------------	--	---------------------------------



ELEV 378	TDZE 377	Visual Segment - Obstacles.			
1200	3000	UMKOW	UMKOW		
APCUD	RW34		3000		
	4.9 NM	6.3 NM			
CATEGORY	A	B	C	D	
LNAV MDA	840-1	463 (500-1)	840-1 3/8	463 (500-1 3/8)	
CIRCLING	1060-1	682 (700-1)	1120-2 1/4 742 (800-2 1/4)	1120-2 1/2 742 (800-2 1/2)	

SW-3, 04 NOV 2021 to 02 DEC 2021

SW-3, 04 NOV 2021 to 02 DEC 2021