

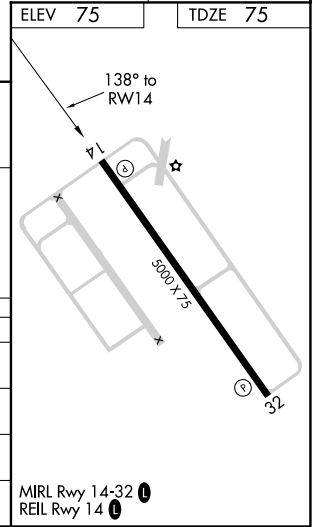
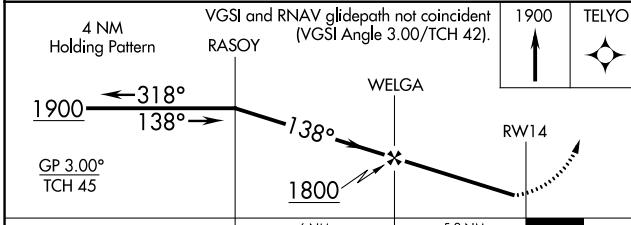
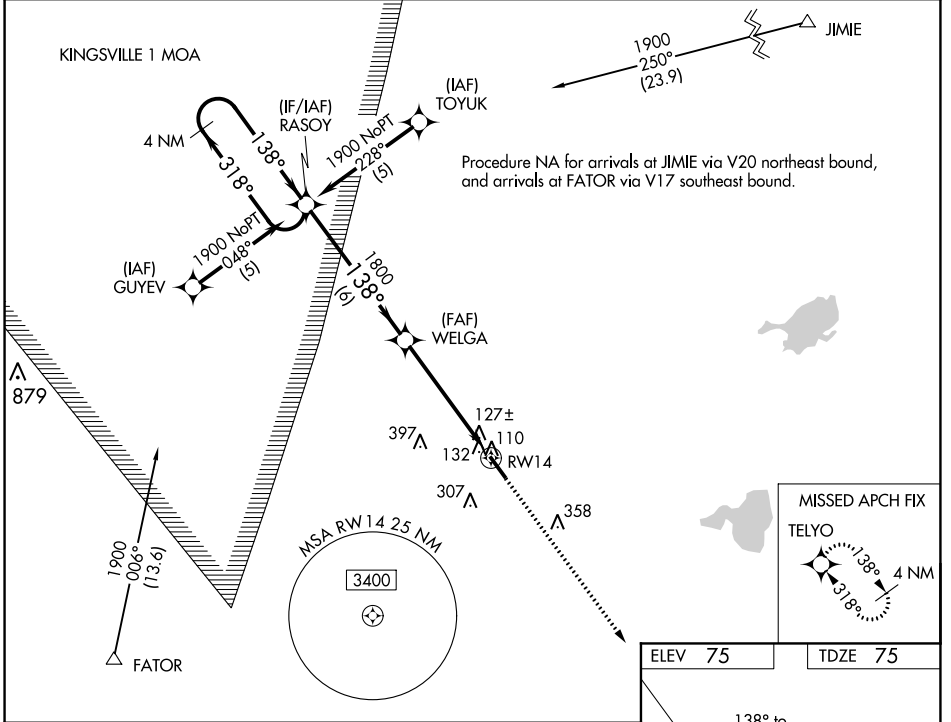
WAAS CH 77901 W14A	APP CRS 138°	Rwy Idg TDZE Apt Elev	5000 75 75
--	------------------------	-----------------------------	---------------------------------------

RNAV (GPS) RWY 14

SOUTH TEXAS INTL AT EDINBURG (E.BG)

RNP APCH.	MISSED APPROACH: Climb to 1900 direct TELYO and hold.
Rwy 14 helicopter visibility reduction below 3/4 SM NA. For uncompensated Baro-VNAV systems, LNAV/VNAV NA below -1.5°C (5°F) or above 48°C (120°F).	

AWOS-3 118.025	CORPUS APP CON 121.0 377.2	UNICOM 122.8 (CTAF) 0
--------------------------	--------------------------------------	---------------------------------



CATEGORY	A	B	C	D
LPV DA		325-1	250 (300-1)	
LNAV/VNAV DA		441-1¼	366 (400-1¼)	
LNAV MDA	440-1	365 (400-1)		440-1¼ 365 (400-1¼)
CIRCLING	500-1¼ 425 (500-1¼)	620-1¼ 545 (600-1¼)	760-2 685 (700-2)	760-2¼ 685 (700-2¼)

SC-3, 04 NOV 2021 to 02 DEC 2021

SC-3, 04 NOV 2021 to 02 DEC 2021