

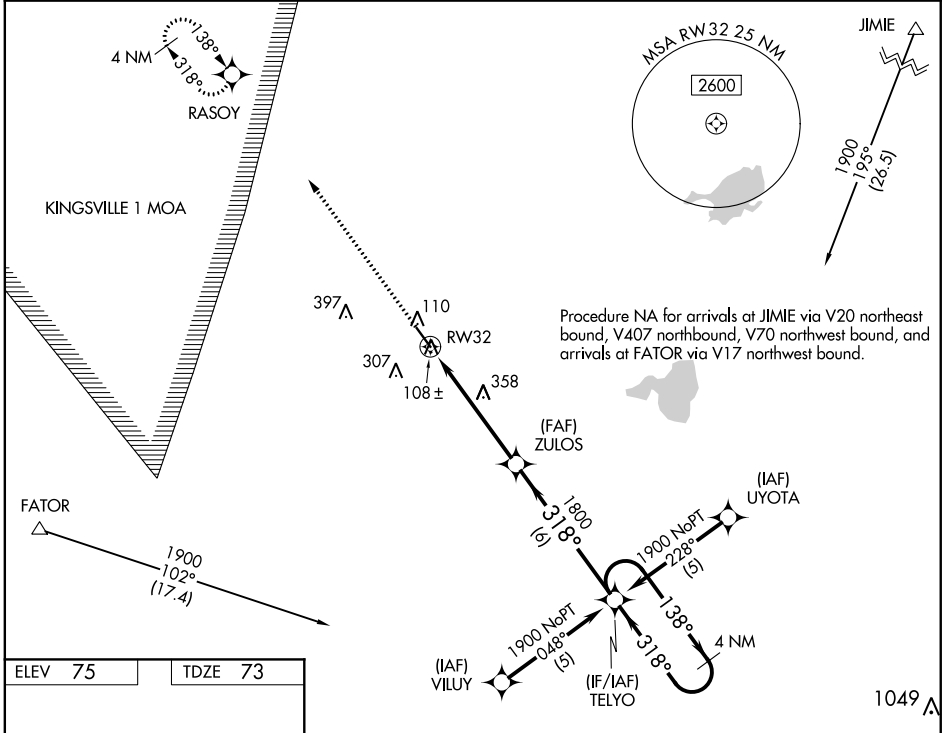
WAAS CH 70701 W32A	APP CRS 318°	Rwy Idg TDZE 73 Apt Elev 75
--	------------------------	---

RNAV (GPS) RWY 32

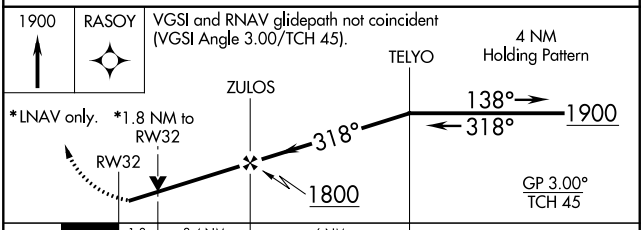
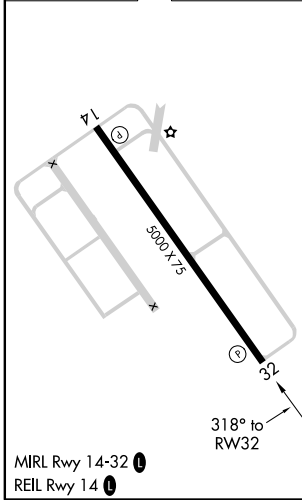
SOUTH TEXAS INTL AT EDINBURG (E.B.G)

RNP APCH.	MISSED APPROACH: Climb to 1900 direct RASOY and hold.
<p>▼ Rwy 32 helicopter visibility reduction below 3/4 SM NA. ▲ For uncompensated Baro-VNAV systems, LNAV/VNAV NA below -15°C (5°F) or above 48°C (120°F).</p>	

AWOS-3 118.025	CORPUS APP CON 121.0 377.2	UNICOM 122.8 (CTAF) 0
--------------------------	--------------------------------------	---------------------------------



ELEV 75	TDZE 73
---------	---------



CATEGORY	A	B	C	D
LPV DA	323-3/4 250 (300-3/4)			
LNAV/VNAV DA	361-1 288 (300-1)			
LNAV MDA	660-1	587 (600-1)	660-1 1/2 587 (600-1 1/2)	660-1 3/4 587 (600-1 3/4)
CIRCLING	660-1 585 (600-1)	620-1 545 (600-1)	760-2 685 (700-2)	760-2 1/4 685 (700-2 1/4)

SC-3, 04 NOV 2021 to 02 DEC 2021

SC-3, 04 NOV 2021 to 02 DEC 2021