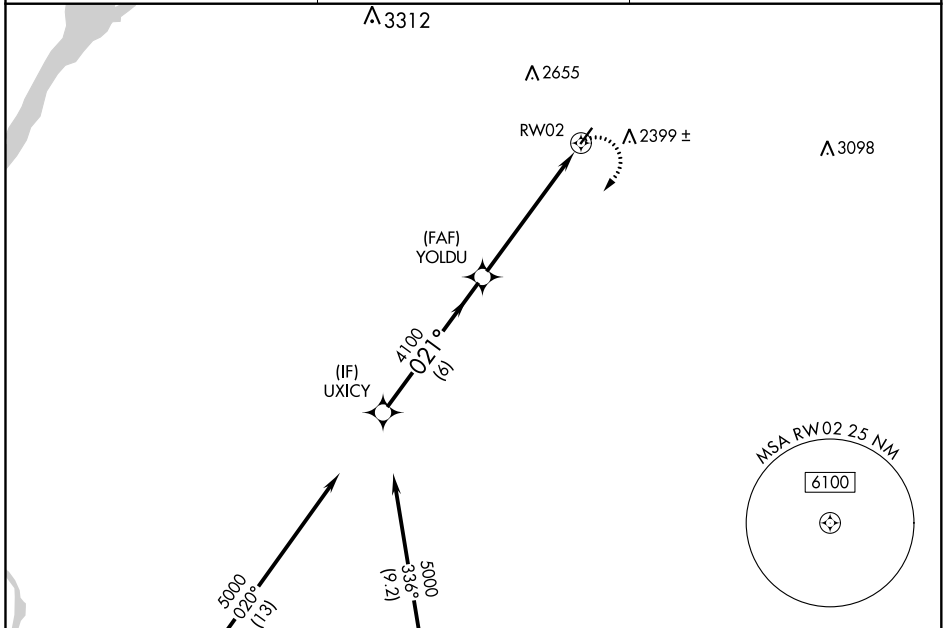


APP CRS	Rwy Idg	N/A
<b>021°</b>	TDZE	N/A
	Apt Elev	<b>2183</b>

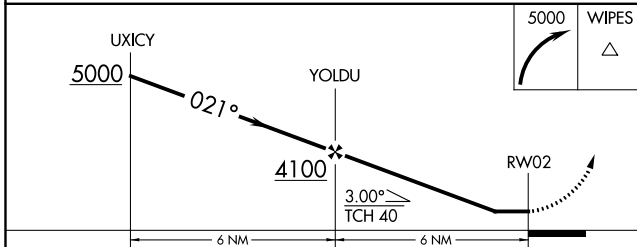
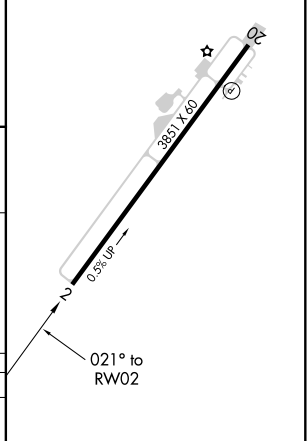
**RNAV (GPS)-A**  
WILBUR (2S8)

RNP APCH.	MISSED APPROACH: Climbing right turn to 5000 direct WIPES and hold.
<p><b>⚠</b> Circling Rwy 20 NA at night. Rwy 20 helicopter visibility reduction below 1 SM NA. When local altimeter not received, use Ephrata altimeter setting and increase all MDAs 240 feet and increase Cat B visibility ¼ SM.</p>	

AWOS-2 <b>124.175</b>	GRANT COUNTY APP CON * <b>126.4 379.95</b>	CTAF <b>122.9</b>
--------------------------	---	----------------------



ELEV 2183
MIRL Rwy 2-20
REIL Rwy 2



CATEGORY	A	B	C	D
<b>Ⓢ</b> CIRCLING	3000-1¼	817 (900-1¼)	NA	

NW-1, 04 NOV 2021 to 02 DEC 2021

NW-1, 04 NOV 2021 to 02 DEC 2021