

**GRAY AAF (JOINT BASE LEWIS—MCCHORD)** WA (GRF)(KGRF) A (AR ARNG) 1 E UTC-8(-7DT)

SEATTLE

N47°04.75' W122°34.85'

H-1B, L-1D

301 B TPA—See Remarks NOTAM FILE GRF Not insp.

DIAP, AD

**RWY 15-33:** H6124X150 (ASPH) PCN 55 F/A/W/T HIRL**RWY 15:** SSALR. PAPI(P4L)—GA 3.0° TCH 58'. RVR-T Tower.**RWY 33:** SSALR. RVR-R**SERVICE:** FUEL JET A++ **MILITARY—** FUEL A++ (Mil) Ltd supply. Ltd tran alert. NATO F24 avbl.**MILITARY REMARKS:** Base ops, PAR, twr, wx opr 24 hrs clsd hol. No incoming Space A passengers without prior approval.**RSTD** 48 hr PPR tran acft. ctc Base Ops DSN 357-6628/5998, C253-967-6628/5998. **CAUTION** Extv NVD trng and PJE.

High volume of night vision trng on afld, portions of afld lgtg may be dim or off. Numerous small arms 0.8 NM east of

afld. **TFC PAT** TPA—E/W tfc, fixed wing 1800(1494), rotary wing 800(494). **MISC** Special VFR day F/W 700-1, R/W

300-1/2. Ngt F/W not auth, R/W 500-1. Acft conducting tactical opr on JBLM mil reservation ctc ops prior to opr. Ctc

Gray tfc on CTAF when twr clsd. Class D airspace eff cont when twr open, OT Class E. No hgr for trans acft. Base ops,

PAR, twr, and wx opr cont. Clsd hol. Rwy cond reading will be reported Mon-Fri, 1500-2300Z† via NOTAM and ATIS dur

inclement winter wx. Wx obsn visibility ltd to 2 SM in some directions. Wx obsn visibility ltd to 2 SM in some directions.

Wx obsn augmented/backup Mon-Fri 0800-0800Z† and 1700-0100Z† Sat and Sun or end of lcl flying daily and dur

inclement wx, as rqr'd. Clsd hol. Pilots of mil rotary-wing acft shall inform Gray Twr on initial ctc if they are unaided.

**USAR** Ctc OPS DSN 357-3036, C253-967-3036. **ARNG** Opr 1430-0100Z† Tue-Fri exc hol. Tran alert svc not avbl.**AIRPORT MANAGER:** 253 967 6628**COMMUNICATIONS:** CTAF 119.325 ATIS 124.65 306.2**BULLSEYE RADIO** 34.6 141.5 379.1 Opr continuously. Clsd hol. All rotary wing acft ctc Bullseye radio prior to entry

R6703A-J, range status avbl on UHF 384.525 and VHF 142.7.

Ⓡ **SEATTLE APP/DEP CON** 120.1**TOWER** 119.325 256.8 (24 hrs clsd hol.) **GND CON** 121.9 290.2 **CLNC DEL** 121.9 290.2**PMSV METRO** 134.1 38.45 (Wx ops H24, clsd hol. Wx fit DSN 357-7061/4363, COML 253-967-7061/4363).

AN/FMQ-19 Automated observing sys in use, augmented by human obsn when NEC. Dur wx fit closures remote briefing

svc avbl from 25 OWS DSN 228-6598/6599/6588, COML 250-228-6598/6599/6588)

**OPS** 41.50 138.6 395.225 (Opr cont. Clsd hol.) **USAR OPS** 30.5 36.10 245.5 **ARNG OPS** 32.6**CLEARANCE DELIVERY PHONE:** For CD when ATCT is clsd ctc Seattle Apch at 206-214-4723. 120.1/290.9.**AIRSPACE:** CLASS D svc 24 hours, clsd hol; other times CLASS E.**RADIO AIDS TO NAVIGATION:** NOTAM FILE OLM.**OLYMPIA (H) (H) VORTACW** 113.4 OLM Chan 81 N46°58.30' W122°54.11' 045° 14.7 NM to fld. 200/19E.

TACAN AZIMUTH &amp; DME unusable:

223°-258° byd 20 NM blo 4,100'

258°-283° byd 30 NM blo 4,100'

358°-043° byd 10 NM blo 6,000'

358°-043° byd 20 NM blo 7,000'

**ILS/DME** 108.3 I-GRF Chan 20 Rwy 15. ILS - No NOTAM MP 1300-1500Z† Fri. Radar - No NOTAM MP

1400-1600Z† Fri.

**ASR/PAR** (ASR, 1400-0600Z†) (PAR, OPR CONSLY. CLSD HOL. POC DSN 357-9886 or C253-967-9886)**GRAYLING** (KGX)(PAGX) 1 S UTC-9(-8DT) N62°53.53' W160°03.98'

MC GRATH

138 B NOTAM FILE ENA

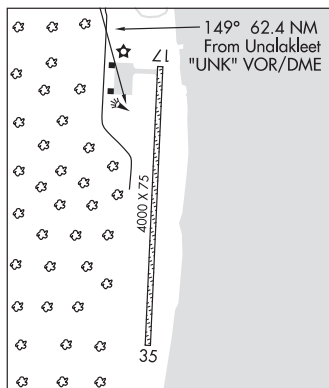
H-1A, 2I, L-3C

**RWY 17-35:** 4000X75 (GRVL) MIRL 1.1% up S

IAP

**RWY 17:** Brush.**RWY 35:** Brush. Rgt tfc.**SERVICE:** LGT ACTIVATE MIRL Rwy 17-35—CTAF.**AIRPORT REMARKS:** Unattended. Rwy condition not monitored, recommend visual inspection prior to landing. Cold temperature airport. Altitude correction required at or below -24C. Wind sock and segmented circle and overgrown with brush and may be unreliable.**AIRPORT MANAGER:** (907) 438-2416**COMMUNICATIONS:** CTAF 122.9**ANVIK RCO** 122.4 (KENAI RADIO)Ⓡ **ANCHORAGE CENTER APP/DEP CON** 118.15**RADIO AIDS TO NAVIGATION:** NOTAM FILE UNK.**UNALAKLEET (H) (H) VORW/DME** 116.9 UNK Chan 116

N63°53.52' W160°41.06' 149° 62.4 NM to fld. 436/15E.

**GREEN'S STRIP** (See WASILLA on page 262)