

YAKUTAT (YAK)(PAYA) 3 SE UTC-9(-8DT) N59°30.20' W139°39.62'

40 B ARFF Index—See Remarks NOTAM FILE YAK

RWY 11-29: H7732X150 (ASPH-GRVD) S-38, D-107, 2D-200

PCN 53 F/B/X/T HIRL

RWY 11: MALSR. PAPI(P4L)—GA 3.0° TCH 56'. RVR-T

RWY 29: MALSR. PAPI(P4L)—GA 3.0° TCH 51'. RVR-R Trees. Rgt tfc.

RWY 02-20: H6475X150 (CONC) S-38, D-107, 2D-200

PCN 59 R/C/X/T HIRL

RWY 02: REIL. PAPI(P4R)—GA 3.0° TCH 27'. Thld dspcd 1388'.

Brush. Rgt tfc.

RWY 20: REIL. PAPI(P4L)—GA 3.0° TCH 29'. Brush.

RUNWAY DECLARED DISTANCE INFORMATION

RWY 02: TORA-6475 TODA-6475 ASDA-6475 LDA-5087

RWY 20: TORA-5087 TODA-5087 ASDA-6475 LDA-6475

SERVICE: FUEL 100, JET A1 + LGT ACTIVATE HIRL Rwy 11-29 and

Rwy 02-20, MALSR Rwy 11 and Rwy 29, PAPI Rwy 11 and Rwy 29

and Rwy 02 and Rwy 20, and REIL Rwy 02 and Rwy 20 and twy

lghts—CTAF. PAPI Rwy 02, Rwy 11 and Rwy 29; HIRL Rwy 02-20;

REIL Rwy 02-20 REIL OTS Oct 1-May 1. Twy lghts Twy B, Twy C, and

Twy D OTS Oct 1-May 1. Rwy 11-29 also Rwy 02-20—be alert, rwy

lghts 30° high.

AIRPORT REMARKS: Attended 1700-0400Z± winter, 1600-0300Z±

summer. Fuel avbl 24 hrs by major credit card pump. Fuel distributor

907-784-3311. Be alert possible snow piles on ramp and snow berms on twy edges Oct 1 thru May 1. Class I, ARFF

Index B. ARFF Index B svc avbl during air carrier ops only. CLOSED to air carrier ops with more than 30 pax seats exc

24 hrs PPR in writing to Arpt Manager P.O. Box 186 Yakutat AK 99689. 24 hr PPR for cargo ops over 100,000 lbs call

907-784-3476. Snow removal, wildlife ctl, cond reporting, and other added afld maint services only avbl and valid drg

arpt maint duty hrs. Ctc arpt mgmt for after hrs req for afld services. Arpt maint duty hrs 1700-0400Z± dly. Twy C and

Twy A1 clsd during air carrier ops until 15 minutes after due to jet blast. Numerous birds, bear and moose on and invof

rwy. Parachute jumping onto arpt rwy, twy and acft parking apron prohibited. Road angles 100' to 230' from Rwy 02

thld. Snow removal, ice ctl and arpt hazardous conditions reported only during arpt maint duty hrs. Rwy 02-20 not

maintained or monitored Oct 1 thru May 1. Rwy condition reports reflect conditions during arpt maint duty hrs only. Arpt

maintenance personnel and eqpt may be on rwy at any time, recommend visual inspection prior to use, ctc nearest FSS

for current NOTAM. Twy A1, Twy D and apron B clsd to acft 12,500 lbs and over. Twy B, Twy C, and Twy D not maintained

or monitored Oct 1-May 1. Arpt sand larger gradation than FAA recommended/see AC150/5200-30. NWS weather

balloon launch fac located on arpt, see inside back cover for opn details.

AIRPORT MANAGER: 907-784-3293

WEATHER DATA SOURCES: ASOS 135.75 (907) 784-3116. (WX CAM)

COMMUNICATIONS: CTAF 123.6

RCO 122.2 123.6 (JUNEAU RADIO)

ANCHORAGE CENTER APP/DEP CON 119.0

AIRSPACE: CLASS E svc continuous.

RADIO AIDS TO NAVIGATION: NOTAM FILE YAK.

(H) (H) VOR/DME 113.3 YAK Chan 80 N59°30.65' W139°38.89' at fld. 41/20E.

VOR unusable:

124°-261° byd 22 NM blo 10,000'

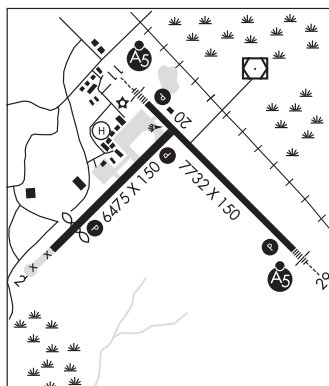
DME unusable:

124°-261° byd 22 NM blo 10,000'

OCEAN CAPE NDB (HW) 385 OCC N59°32.62' W139°43.69' 119° 3.2 NM to fld. 20E.

ILS 111.1 I-YAK Rwy 11. Class IB. LOC unusable fm .2 NM to thld.

COMM/NAV/WEATHER REMARKS: For a toll free call to Juneau FSS dial 1-866-297-2236. WSO telephone 784-3322.



JUNEAU

H-1C, L-1B, 3E

IAP