

INDIANAPOLIS RGNL (MQJ)(KMQJ) 12 E UTC-5(-4DT) N39°50.59' W85°53.86'

ST LOUIS

862 B NOTAM FILE HUF MON Airport

H-5E, 10F, L-27D

RWY 07-25: H6005X100 (ASPH-GRVD) S-30, D-75, 2S-83 HIRL

IAP

RWY 07: REIL. PAPI(P4L)—GA 3.0° TCH 40'.

RWY 25: MALSR. PAPI(P4L)—GA 3.0° TCH 55'.

RWY 16-34: H3902X75 (CONC) S-12.5 MIRL

RWY 16: PAPI(P2L)—GA 3.0° TCH 46'.

RWY 34: REIL. PAPI(P2L)—GA 3.0° TCH 49'.

SERVICE: S4 FUEL 100LL, JET A, A+ OX 3, 4 LGT Actvt MALSR Rwy 25; HIRL Rwy 07-25—CTAF.

AIRPORT REMARKS: Attended 1100-0300Z†. Avbl aft hr - 317-335-3371.

For fuel & svc—131.5. Rwy 16-34 & Twy B not avbl to acr with more than 30 pax seats.

AIRPORT MANAGER: 317-487-5022

WEATHER DATA SOURCES: AWOS-3 124.175 (317) 335-3037.

COMMUNICATIONS: CTAF/UNICOM 122.975

Ⓡ APP/DEP CON 127.15

CLNC DEL 119.25

CLEARANCE DELIVERY PHONE: For CD ctc Indianapolis Apch at 317-227-5743.

RADIO AIDS TO NAVIGATION: NOTAM FILE HUF.

SHELBYVILLE (L) (L) VOR/DME 112.0 SHB Chan 57 N39°37.95'

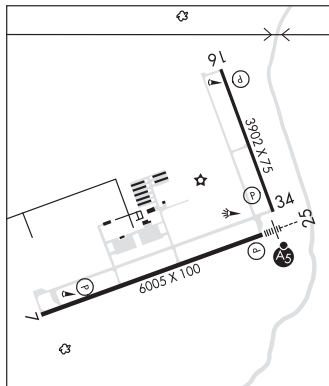
W85°49.46' 344° 13.1 NM to fld. 805/1E.

VOR unusable:

Byd 25 NM blo 3,000'

180°-270° byd 17 NM blo 6,000'

ILS 108.7 I-MQJ Rwy 25. Unmonitored. LOC unusable byd 20° left/right of course. Classification code ie.



INDY SOUTH GREENWOOD (HFY)(KHFY) 10 SE UTC-5(-4DT) N39°37.66' W86°05.28'

ST LOUIS

822 B TPA—1622(800) NOTAM FILE HUF

H-5E, 10F, L-27D

RWY 01-19: H5102X75 (ASPH-GRVD) MIRL

IAP

RWY 01: REIL. PAPI(P4L)—GA 3.0° TCH 39'. Thld dspcd 102'. Tree.

RWY 19: ODALS. PAPI(P4L)—GA 3.0° TCH 49'. Thld dspcd 100'.

Road.

SERVICE: S4 FUEL 100LL, JET A OX 1, 2, 3, 4 LGT ACTIVATE REIL Rwy 01; MIRL Rwy 01-19—CTAF.

AIRPORT REMARKS: Attended Mon-Sat 1200-0000Z†, Sun 1300-2200Z†.

Attendant after hrs call 317-760-4047. Self svc fuel avbl 24 hrs. High ints student training. Rwy 01-19 10' drainage ditch 125' right/left of centerline.

AIRPORT MANAGER: (317) 881-0887

WEATHER DATA SOURCES: AWOS-3P 118.525 (317) 882-5862.

COMMUNICATIONS: CTAF/UNICOM 123.0

Ⓡ INDIANAPOLIS APP/DEP CON 124.95

GCO 121.725 (INDIANAPOLIS CLNC AND FLIGHT SERVICES - TO ACTVT 4 SLOW CLICKS. IF UNAVBL CALL 317-227-5743)

RADIO AIDS TO NAVIGATION: NOTAM FILE HUF.

SHELBYVILLE (L) (L) VOR/DME 112.0 SHB Chan 57 N39°37.95'

W85°49.46' 268° 12.2 NM to fld. 805/1E.

VOR unusable:

Byd 25 NM blo 3,000'

180°-270° byd 17 NM blo 6,000'

